

NXPE1 Antibody



PACO39398

Product Information

Size:

50ug

Reactivity:

Human

Source:

Rabbit

Isotype:

IgG

Form:

Liquid

Conjugate:

Non-conjugated

Applications:

ELISA, WB, IHC

Recommended dilutions:

WB:1:500-1:2000,

IHC:1:20-1:200

Purification Method:

>95%, Protein G purified

Clonality:

Polyclonal

Product type:

Polyclonal Antibody

Gene ID:

NXPE1

Uniprot

Q8N323

Synonyms:

NXPE family member 1 (Protein FAM55A), NXPE1, FAM55A

Immunogen:

Recombinant Human NXPE family member 1 protein (1-405AA).

Storage Buffer:

Preservative: 0.03% Proclin 300.

Constituents: 50% Glycerol, 0.01M PBS, PH 7.4

Storage:

Upon receipt, store at -20°C or -80°C. Avoid repeated freeze.

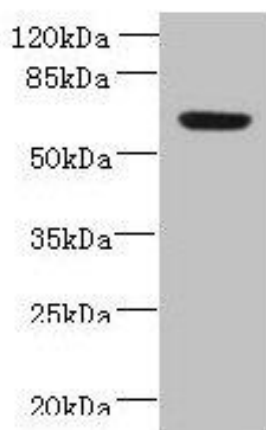
Immunogen Species:

Homo sapiens (Human)

Research Area:

Cell Biology

Product Images



Western blot.

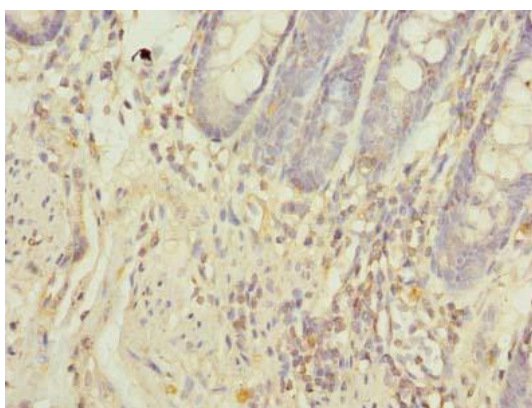
All lanes: NXPE1 antibody at 4 μ g/ml + Human high value serum.

Secondary.

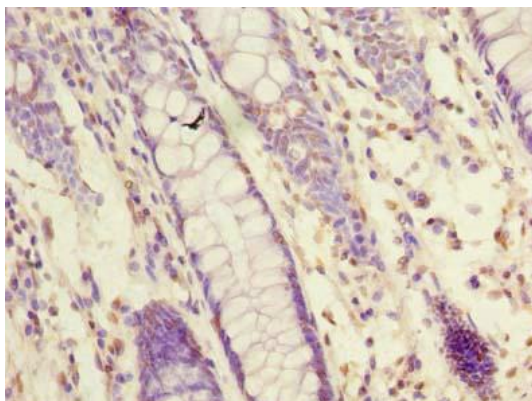
Goat polyclonal to rabbit IgG at 1/10000 dilution.

Predicted band size: 64, 47 kDa.

Observed band size: 64 kDa.



Immunohistochemistry of paraffin-embedded human colon tissue using PACO39398 at dilution of 1:100.



Immunohistochemistry of paraffin-embedded human colon cancer using PACO39398 at dilution of 1:100.