

CYP4X1 Antibody



PACO39378

Product Information

Size:

50ug

Reactivity:

Human

Source:

Rabbit

Isotype:

IgG

Applications:

ELISA, IHC, IF

Recommended dilutions:

ELISA:1:2000-1:10000, IHC:1:20-1:200,
IF:1:50-1:200

Protein Background:**Gene ID:**

CYP4X1

Uniprot

Q8N118

Synonyms:

Cytochrome P450 4X1 (EC 1.14.14.1) (CYP4X1), CYP4X1

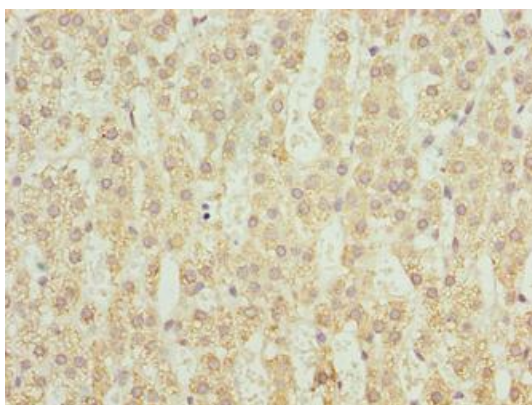
Immunogen:

Recombinant Human Cytochrome P450 4X1 protein (35-300AA).

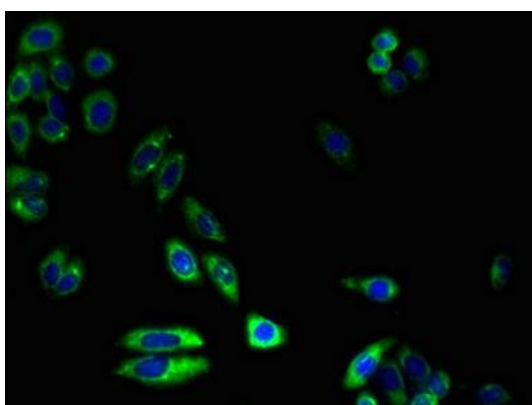
Storage:

Preservative: 0.03% Proclin 300. Constituents: 50% Glycerol, 0.01M PBS, PH 7.4

Product Images



Immunohistochemistry of paraffin-embedded human adrenal gland tissue using PACO39378 at dilution of 1:100.



Immunofluorescent analysis of HepG2 cells using PACO39378 at dilution of 1:100 and Alexa Fluor 488-conjugated AffiniPure Goat Anti-Rabbit IgG(H+L).