

SLC38A2 Antibody



PACO39354

Product Information

Size:

50ug

Reactivity:

Human

Source:

Rabbit

Isotype:

IgG

Applications:

ELISA, WB, IHC, IF

Recommended dilutions:

ELISA:1:2000-1:10000, WB:1:500-1:2000,
IHC:1:20-1:200, IF:1:50-1:200

Protein Background:

Functions as a sodium-dependent amino acid, transporter. Mediates the saturable, pH-sensitive and electrogenic cotransport of neutral amino acid, and sodium ions with a stoichiometry of 1:1. May function in the transport of amino acid, at the blood-brain barrier and in the supply of maternal nutrients to the fetus through the placenta.

Gene ID:

SLC38A2

Uniprot

Q96QD8

Synonyms:

Sodium-coupled neutral amino acid, transporter 2 (Amino acid, transporter A2) (Protein 40-9-1) (Solute carrier family 38 member 2) (System A amino acid, transporter 2) (System A transporter 1) (System N amino acid, transporter 2), SLC38A2, ATA2 KIAA1382 SAT2 SNAT2

Immunogen:

Recombinant Human Sodium-coupled neutral amino acid, transporter 2 protein (1-76AA).

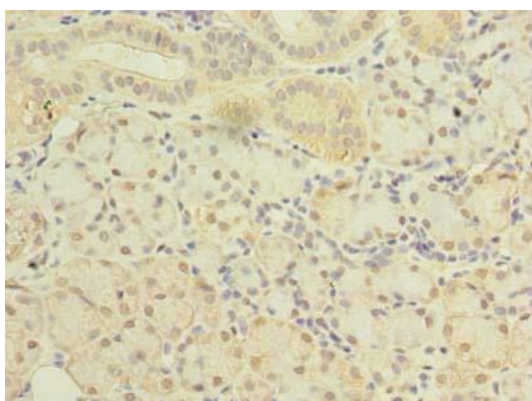
Storage:

Preservative: 0.03% Proclin 300. Constituents: 50% Glycerol, 0.01M PBS, PH 7.4

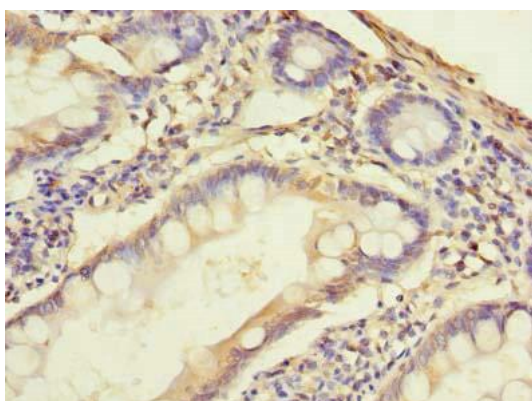
Product Images



Western blot. All lanes: SLC38A2 antibody at 1.5 μ g/ml + A431 whole cell lysate. Secondary. Goat polyclonal to rabbit IgG at 1/10000 dilution. Predicted band size: 57, 46 kDa. Observed band size: 57 kDa.



Immunohistochemistry of paraffin-embedded human pancreatic tissue using PACO39354 at dilution of 1:100.



Immunohistochemistry of paraffin-embedded human small intestine tissue using PACO39354 at dilution of 1:100.