

GPR101 Antibody



PACO39338

Product Information

Size:

50ug

Reactivity:

Human

Source:

Rabbit

Isotype:

IgG

Applications:

ELISA, WB, IF

Recommended dilutions:

ELISA:1:2000-1:10000, WB:1:1000-1:5000,
IF:1:50-1:200

Protein Background:

Orphan receptor.

Gene ID:

GPR101

Uniprot

Q96P66

Synonyms:

Probable G-protein coupled receptor 101, GPR101

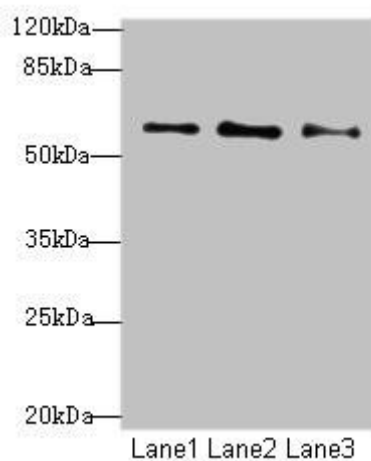
Immunogen:

Recombinant Human Probable G-protein coupled receptor 101 protein (218-399AA).

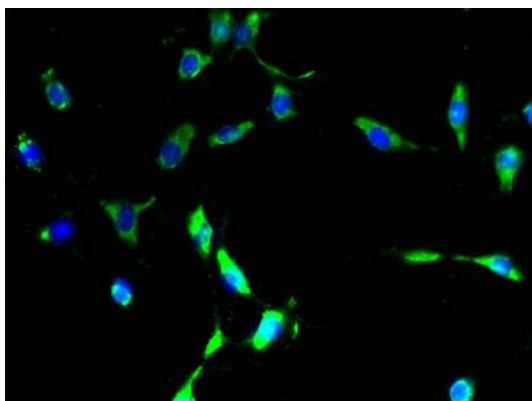
Storage:

Preservative: 0.03% Proclin 300. Constituents: 50% Glycerol, 0.01M PBS, PH 7.4

Product Images



Western blot. All lanes: GPR101 antibody at 6 μ g/ml. Lane 1: MCF-7 whole cell lysate. Lane 2: U87 whole cell lysate. Lane 3: Caco-2 whole cell lysate. Secondary. Goat polyclonal to rabbit IgG at 1/10000 dilution. Predicted band size: 57 kDa. Observed band size: 57 kDa.



Immunofluorescent analysis of U251 cells using PACO39338 at dilution of 1:100 and Alexa Fluor 488-conjugated AffiniPure Goat Anti-Rabbit IgG(H+L).