

PACO39318

Product Information

Size:

50ug

Reactivity:

Human, Rat

Source:

Rabbit

Isotype:

IgG

Applications:

ELISA, WB, IHC

Recommended dilutions:

ELISA:1:2000-1:10000, WB:1:500-1:5000,
IHC:1:20-1:200

Protein Background:

Gene ID:

CHMP6

Uniprot

Q96FZ7

Synonyms:

Charged multivesicular body protein 6 (Chromatin-modifying protein 6) (Vacuolar protein sorting-associated protein 20) (Vps20) (hVps20), CHMP6, VPS20

Immunogen:

Recombinant Human Charged multivesicular body protein 6 protein (2-201AA).

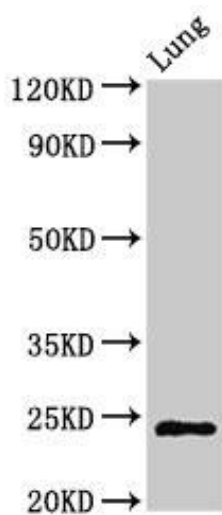
Storage:

Preservative: 0.03% Proclin 300. Constituents: 50% Glycerol, 0.01M PBS, PH 7.4

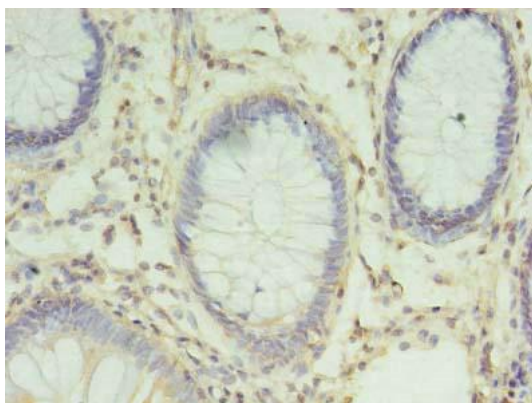
Product Images



Immunohistochemistry of paraffin-embedded human testis tissue using PACO39318 at dilution of 1:100.



Western Blot. Positive WB detected in: Rat lung tissue. All lanes: CHMP6 antibody at 3 μ g/ml. Secondary. Goat polyclonal to rabbit IgG at 1/50000 dilution. Predicted band size: 24 kDa. Observed band size: 24 kDa.



Immunohistochemistry of paraffin-embedded human colon cancer using PACO39318 at dilution of 1:100.