

KLRG1 Antibody



PACO39298

Product Information

Size:

50ug

Reactivity:

Human

Source:

Rabbit

Isotype:

IgG

Applications:

ELISA, IHC

Recommended dilutions:

ELISA:1:2000-1:10000, IHC:1:20-1:200

Protein Background:

Plays an inhibitory role on natural killer (NK) cells and T-cell functions upon binding to their non-MHC ligands. May mediate missing self recognition by binding to a highly conserved site on classical cadherins, enabling it to monitor expression of E-cadherin/CDH1, N-cadherin/CDH2 and R-cadherin/CDH4 on target cells.

Gene ID:

KLRG1

Uniprot

Q96E93

Synonyms:

Killer cell lectin-like receptor subfamily G member 1 (C-type lectin domain family 15 member A) (ITIM-containing receptor MAFA-L) (MAFA-like receptor) (Mast cell function-associated antigen), KLRG1, CLEC15A MAFA MAFAL

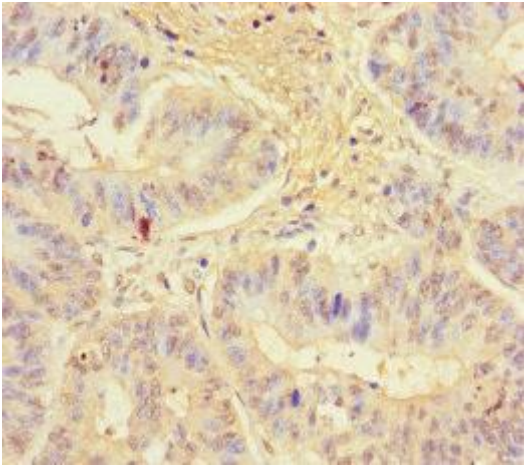
Immunogen:

Recombinant Human Killer cell lectin-like receptor subfamily G member 1 protein (60-195AA).

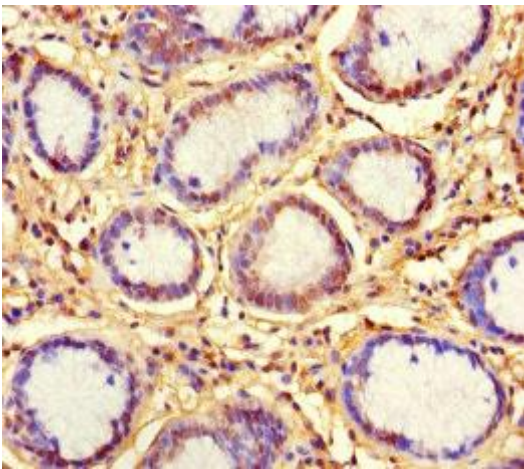
Storage:

Preservative: 0.03% Proclin 300. Constituents: 50% Glycerol, 0.01M PBS, PH 7.4

Product Images



Immunohistochemistry of paraffin-embedded human colon cancer using PACO39298 at dilution of 1:100.



Immunohistochemistry of paraffin-embedded human gastric cancer using PACO39298 at dilution of 1:100.