

RAB3C Antibody



PACO39294

Product Information

Size:

50ug

Reactivity:

Human, Mouse

Source:

Rabbit

Isotype:

IgG

Applications:

ELISA, WB

Recommended dilutions:

ELISA:1:2000-1:10000, WB:1:1000-1:5000

Protein Background:

Protein transport. Probably involved in vesicular traffic.

Gene ID:

RAB3C

Uniprot

Q96E17

Synonyms:

Ras-related protein Rab-3C, RAB3C

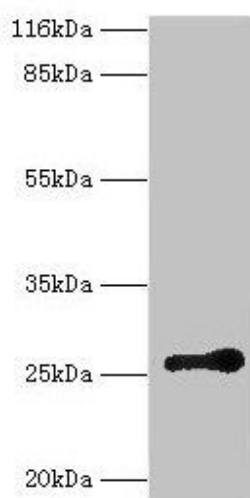
Immunogen:

Recombinant Human Ras-related protein Rab-3C protein (1-227AA).

Storage:

Preservative: 0.03% Proclin 300. Constituents: 50% Glycerol, 0.01M PBS, PH 7.4

Product Images



Western blot. All lanes: RAB3C antibody at 2 μ g/ml + Mouse brain tissue. Secondary. Goat polyclonal to rabbit IgG at 1/10000 dilution. Predicted band size: 26 kDa. Observed band size: 26 kDa.