

# GCC1 Antibody



PACO39274

---

## Product Information

**Size:**

50ug

**Reactivity:**

Human

**Source:**

Rabbit

**Isotype:**

IgG

**Applications:**

ELISA, WB, IHC

**Recommended dilutions:**

ELISA:1:2000-1:10000, WB:1:500-1:2000,  
IHC:1:20-1:200

**Protein Background:**

Probably involved in maintaining Golgi structure.

**Gene ID:**

GCC1

**Uniprot**

Q96CN9

**Synonyms:**

GRIP and coiled-coil domain-containing protein 1 (Golgi coiled-coil protein 1), GCC1

**Immunogen:**

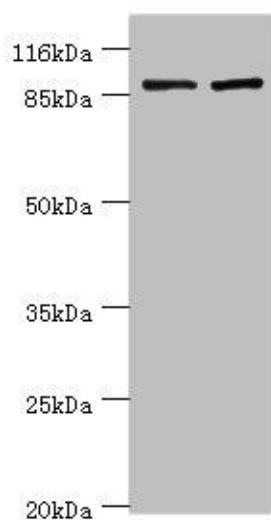
Recombinant Human GRIP and coiled-coil domain-containing protein 1 protein (4-775AA).

**Storage:**

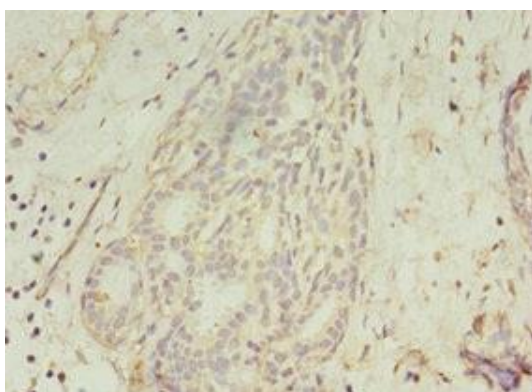
Preservative: 0.03% Proclin 300. Constituents: 50% Glycerol, 0.01M PBS, PH 7.4

## Product Images

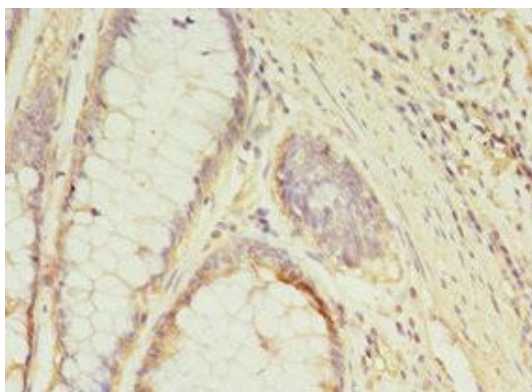
---



Western blot. All lanes: GCC1 antibody at 2 $\mu$ g/ml. Lane 1: HeLa whole cell lysate. Lane 2: 293T whole cell lysate. Secondary: Goat polyclonal to rabbit IgG at 1/10000 dilution. Predicted band size: 88 kDa. Observed band size: 88 kDa.



Immunohistochemistry of paraffin-embedded human breast cancer using PACO39274 at dilution of 1:100.



Immunohistochemistry of paraffin-embedded human colon cancer using PACO39274 at dilution of 1:100.