

TBC1D20 Antibody



PACO39270

Product Information

Size:

50ug

Reactivity:

Human, Mouse

Source:

Rabbit

Isotype:

IgG

Applications:

ELISA, WB, IHC, IF

Recommended dilutions:

ELISA:1:2000-1:10000, WB:1:500-1:5000,
IHC:1:20-1:200, IF:1:50-1:200

Protein Background:

GTPase-activating protein specific for Rab1 and Rab2 small GTPase families for which it can accelerate the intrinsic GTP hydrolysis rate by more than five orders of magnitude.

Gene ID:

TBC1D20

Uniprot

Q96BZ9

Synonyms:

TBC1 domain family member 20, TBC1D20, C20orf140

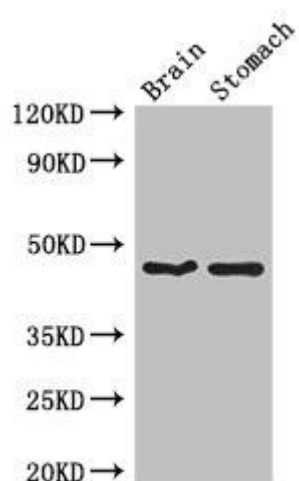
Immunogen:

Recombinant Human TBC1 domain family member 20 protein (1-237AA).

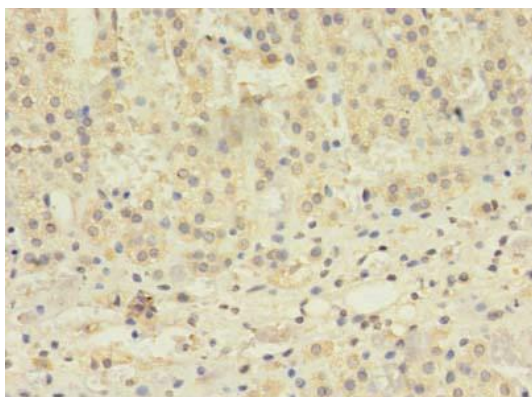
Storage:

Preservative: 0.03% Proclin 300. Constituents: 50% Glycerol, 0.01M PBS, PH 7.4

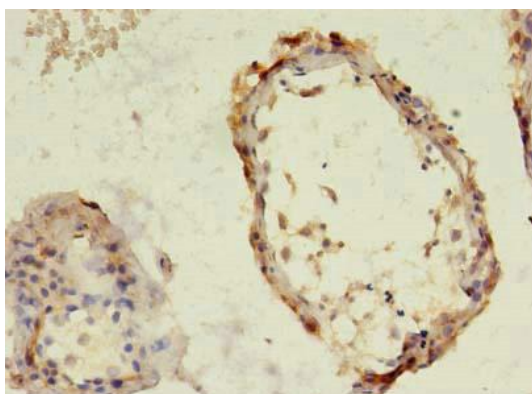
Product Images



Western Blot. Positive WB detected in: Mouse brain tissue, Mouse stomach tissue. All lanes: TBC1D20 antibody at 4 μ g/ml. Secondary. Goat polyclonal to rabbit IgG at 1/50000 dilution. Predicted band size: 46, 20, 49 kDa. Observed band size: 46 kDa.



Immunohistochemistry of paraffin-embedded human adrenal gland tissue using PACO39270 at dilution of 1:100.



Immunohistochemistry of paraffin-embedded human testis tissue using PACO39270 at dilution of 1:100.