

NXPE3 Antibody



PACO39262

Product Information

Size:

50ug

Reactivity:

Human

Source:

Rabbit

Isotype:

IgG

Applications:

ELISA, IHC

Recommended dilutions:

ELISA:1:2000-1:10000, IHC:1:20-1:200

Protein Background:

Gene ID:

NXPE3

Uniprot

Q969Y0

Synonyms:

NXPE family member 3 (Protein FAM55C), NXPE3, FAM55C

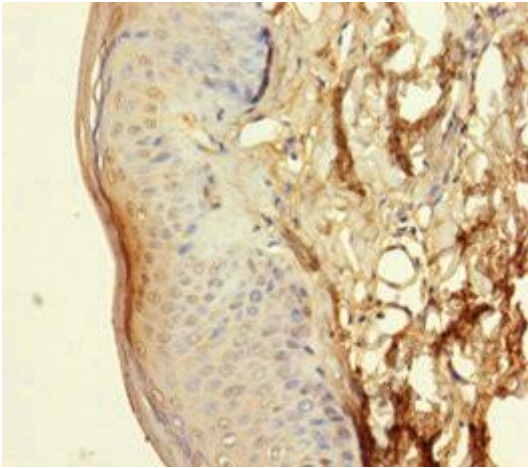
Immunogen:

Recombinant Human NXPE family member 3 protein (31-559AA).

Storage:

Preservative: 0.03% Proclin 300. Constituents: 50% Glycerol, 0.01M PBS, PH 7.4

Product Images



Immunohistochemistry of paraffin-embedded human skin tissue using PACO39262 at dilution of 1:100.