

# SSMEM1 Antibody



PACO39218

---

## Product Information

**Size:**

50ug

**Reactivity:**

Human

**Source:**

Rabbit

**Isotype:**

IgG

**Applications:**

ELISA, IHC, IF

**Recommended dilutions:**

ELISA:1:2000-1:10000, IHC:1:20-1:200,  
IF:1:50-1:200

**Protein Background:****Gene ID:**

SSMEM1

**Uniprot**

Q8WWF3

**Synonyms:**

Serine-rich single-pass membrane protein 1, SSMEM1, C7orf45

**Immunogen:**

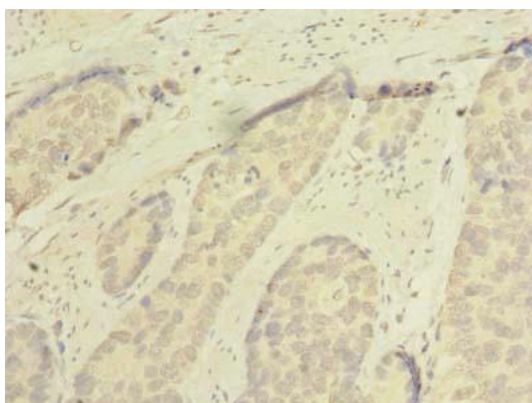
Recombinant Human Serine-rich single-pass membrane protein 1 protein (56-244AA).

**Storage:**

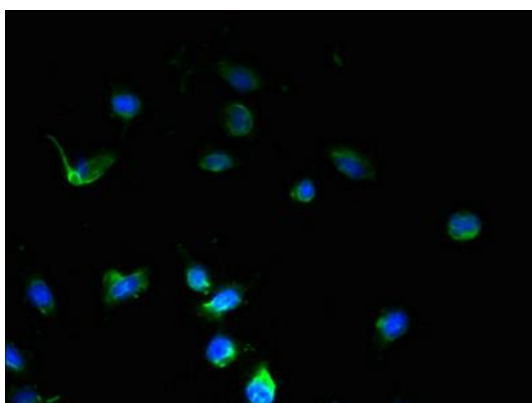
Preservative: 0.03% Proclin 300. Constituents: 50% Glycerol, 0.01M PBS, PH 7.4

## Product Images

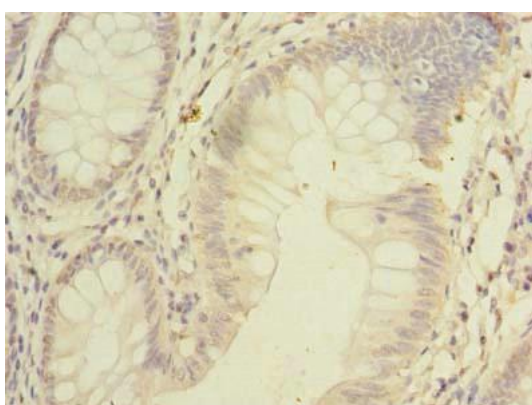
---



Immunohistochemistry of paraffin-embedded human gastric cancer using PACO39218 at dilution of 1:100.



Immunofluorescent analysis of U251 cells using PACO39218 at dilution of 1:100 and Alexa Fluor 488-conjugated AffiniPure Goat Anti-Rabbit IgG(H+L).



Immunohistochemistry of paraffin-embedded human colon cancer using PACO39218 at dilution of 1:100.