

Product Information

Size:

50ug

Reactivity:

Human

Source:

Rabbit

Isotype:

IgG

Applications:

ELISA, IHC, IF

Recommended dilutions:

ELISA:1:2000-1:10000, IHC:1:20-1:200,
IF:1:50-1:200

Protein Background:

Phospholipase that may play a role in phospholipids remodeling. May selectively cleave myristate (C14)-containing phosphatidylcholines through its predominant phospholipase 1 activity, cleaving preferentially acyl groups in sn1 position. In parallel, may have a minor phospholipase 2 activity acting on acyl groups in position sn2. In addition to (C14)-containing phosphatidylcholines, may also act on other medium-chain-containing and oxidatively truncated phospholipids.

Gene ID:

ABHD3

Uniprot

Q8WU67

Synonyms:

Phospholipase ABHD3 (EC 3.1.1.32) (EC 3.1.1.4) (Abhydrolase domain-containing protein 3), ABHD3

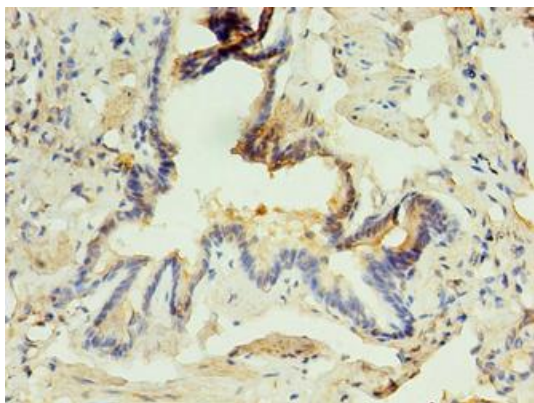
Immunogen:

Recombinant Human Phospholipase ABHD3 protein (52-309AA).

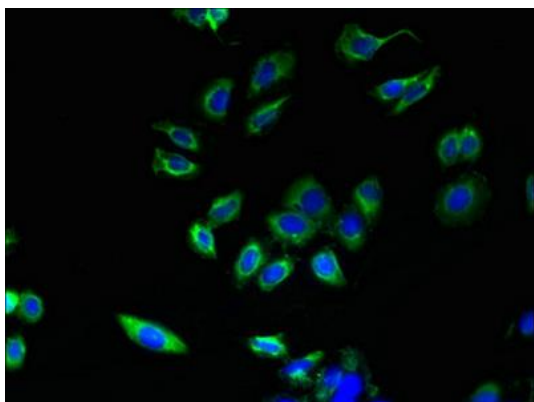
Storage:

Preservative: 0.03% Proclin 300. Constituents: 50% Glycerol, 0.01M PBS, PH 7.4

Product Images



Immunohistochemistry of paraffin-embedded human lung tissue using PACO39202 at dilution of 1:100.



Immunofluorescent analysis of HepG2 cells using PACO39202 at dilution of 1:100 and Alexa Fluor 488-conjugated AffiniPure Goat Anti-Rabbit IgG(H+L).