

# SLC7A14 Antibody



PACO39190

---

## Product Information

**Size:**

50ug

**Reactivity:**

Human

**Source:**

Rabbit

**Isotype:**

IgG

**Applications:**

ELISA, IHC

**Recommended dilutions:**

ELISA:1:2000-1:10000, IHC:1:20-1:200

**Protein Background:**

May be involved in arginine transport.

**Gene ID:**

SLC7A14

**Uniprot**

Q8TBB6

**Synonyms:**

Probable cationic amino acid, transporter (Solute carrier family 7 member 14), SLC7A14, KIAA1613

**Immunogen:**

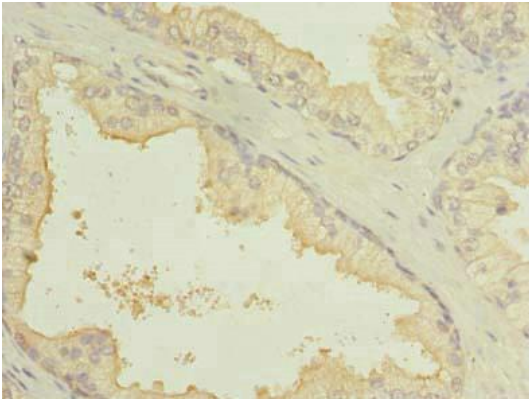
Recombinant Human Probable cationic amino acid, transporter protein (676-771AA).

**Storage:**

Preservative: 0.03% Proclin 300. Constituents: 50% Glycerol, 0.01M PBS, PH 7.4

## Product Images

---



Immunohistochemistry of paraffin-embedded human prostate cancer using PACO39190 at dilution of 1:100.