

# MFSD8 Antibody



PACO39166

---

## Product Information

**Size:**

50ug

**Reactivity:**

Human

**Source:**

Rabbit

**Isotype:**

IgG

**Applications:**

ELISA, IHC, IF

**Recommended dilutions:**

ELISA:1:2000-1:10000, IHC:1:20-1:200,  
IF:1:50-1:200

**Protein Background:**

May be a carrier that transport small solutes by using chemiosmotic ion gradients.

**Gene ID:**

MFSD8

**Uniprot**

Q8NHS3

**Synonyms:**

Major facilitator superfamily domain-containing protein 8 (Ceroid-lipofuscinosis neuronal protein 7), MFSD8, CLN7

**Immunogen:**

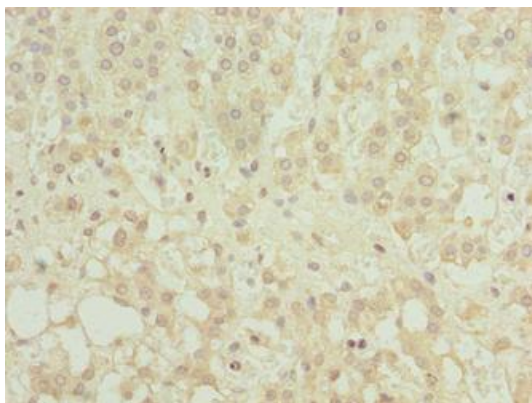
Recombinant Human Major facilitator superfamily domain-containing protein 8 protein (1-40AA).

**Storage:**

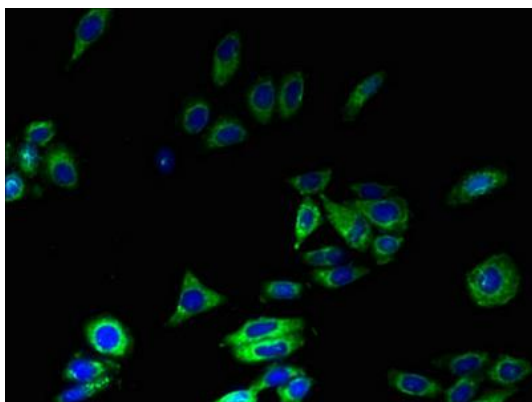
Preservative: 0.03% Proclin 300. Constituents: 50% Glycerol, 0.01M PBS, PH 7.4

## Product Images

---



Immunohistochemistry of paraffin-embedded human adrenal gland tissue using PACO39166 at dilution of 1:100.



Immunofluorescent analysis of HepG2 cells using PACO39166 at dilution of 1:100 and Alexa Fluor 488-conjugated AffiniPure Goat Anti-Rabbit IgG(H+L).