

NEK11 Antibody



PACO39162

Product Information

Size:

50ug

Reactivity:

Human

Source:

Rabbit

Isotype:

IgG

Applications:

ELISA, WB, IHC

Recommended dilutions:

ELISA:1:2000-1:10000, WB:1:500-1:2000,
IHC:1:20-1:200

Protein Background:

Protein kinase which plays an important role in the G2/M checkpoint response to DNA damage. Controls degradation of CDC25A by directly phosphorylating it on residues whose phosphorylation is required for BTRC-mediated polyubiquitination and degradation.

Gene ID:

NEK11

Uniprot

Q8NG66

Synonyms:

Serine/threonine-protein kinase Nek11 (EC 2.7.11.1) (Never in mitosis A-related kinase 11) (NimA-related protein kinase 11), NEK11

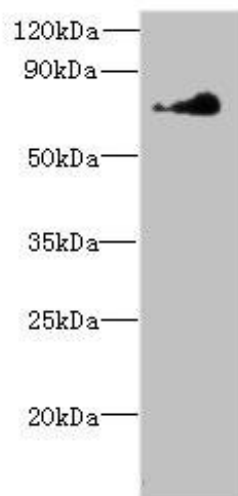
Immunogen:

Recombinant Human Serine/threonine-protein kinase Nek11 protein (245-482AA).

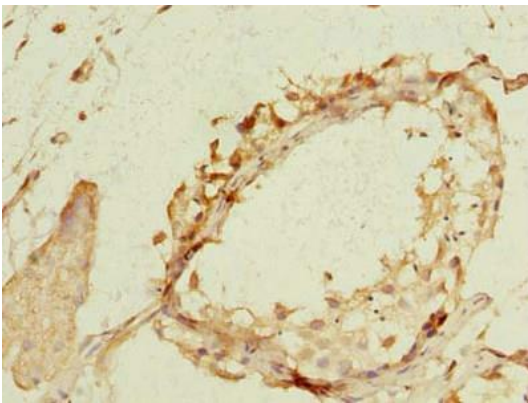
Storage:

Preservative: 0.03% Proclin 300. Constituents: 50% Glycerol, 0.01M PBS, PH 7.4

Product Images



Western blot. All lanes: NEK11 antibody at 7 μ g/ml + HeLa whole cell lysate. Secondary. Goat polyclonal to rabbit IgG at 1/10000 dilution. Predicted band size: 75, 55, 56, 69 kDa. Observed band size: 75 kDa.



Immunohistochemistry of paraffin-embedded human testis tissue using PACO39162 at dilution of 1:100.