

# PNPLA1 Antibody



PACO39106

---

## Product Information

**Size:**

50ug

**Reactivity:**

Human, Mouse

**Source:**

Rabbit

**Isotype:**

IgG

**Applications:**

ELISA, WB, IHC, IF

**Recommended dilutions:**

ELISA:1:2000-1:10000, WB:1:1000-1:5000,  
IHC:1:20-1:200, IF:1:50-1:200

**Protein Background:**

Lipid hydrolase. Important in the formation of the epidermal lipid barrier. Plays a role in glycerophospholipid metabolism.

**Gene ID:**

PNPLA1

**Uniprot**

Q8N8W4

**Synonyms:**

Patatin-like phospholipase domain-containing protein 1 (EC 3.1.1. -), PNPLA1

**Immunogen:**

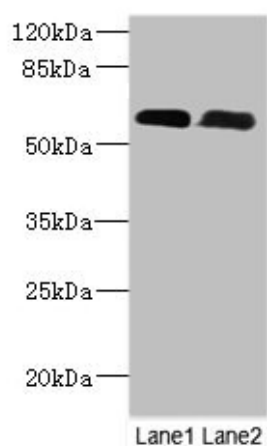
Recombinant Human Patatin-like phospholipase domain-containing protein 1 protein (101-300AA).

**Storage:**

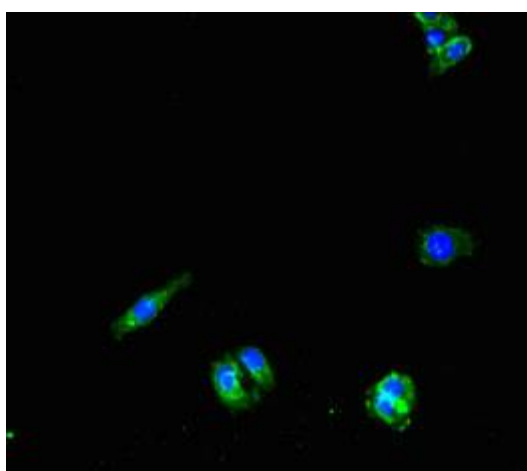
Preservative: 0.03% Proclin 300. Constituents: 50% Glycerol, 0.01M PBS, PH 7.4

## Product Images

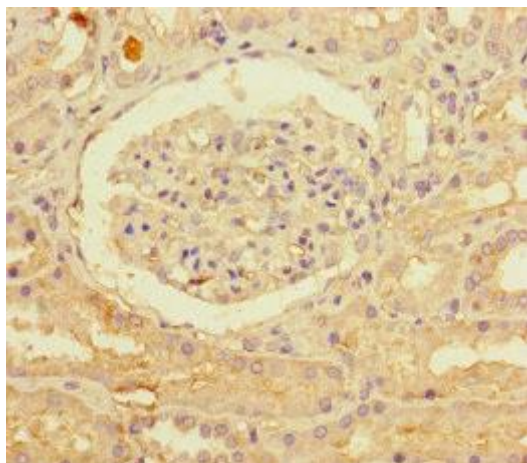
---



Western Blot. All lanes: PNPLA1 antibody at 12 $\mu$ g/ml. Lane 1: Mouse spleen tissue. Lane 2: Mouse skeletal muscle tissue. Secondary: Goat polyclonal to rabbit IgG at 1/10000 dilution. Predicted band size: 58, 48, 49 kDa. Observed band size: 58 kDa.



Immunofluorescent analysis of HepG2 cells using PACO39106 at dilution of 1:100 and Alexa Fluor 488-conjugated AffiniPure Goat Anti-Rabbit IgG(H+L).



Immunohistochemistry of paraffin-embedded human kidney tissue using PACO39106 at dilution of 1:100.