

SLC35F6 Antibody



PACO39074

Product Information

Size:

50ug

Reactivity:

Human

Source:

Rabbit

Isotype:

IgG

Applications:

ELISA, IHC, IF

Recommended dilutions:

ELISA:1:2000-1:10000, IHC:1:20-1:200,
IF:1:50-1:200

Protein Background:

Involved in the maintenance of mitochondrial membrane potential in pancreatic ductal adenocarcinoma (PDAC) cells. Promotes pancreatic ductal adenocarcinoma (PDAC) cell growth. May play a role as a nucleotide-sugar transporter.

Gene ID:

SLC35F6

Uniprot

Q8N357

Synonyms:

Solute carrier family 35 member F6 (ANT2-binding protein) (ANT2BP) (Transport and Golgi organization 9 homolog), SLC35F6, C2orf18

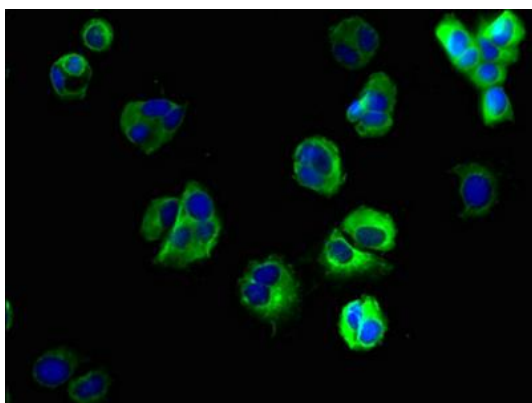
Immunogen:

Recombinant Human Solute carrier family 35 member F6 protein (337-371AA).

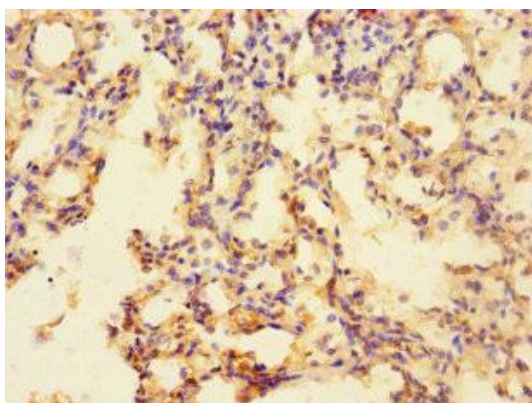
Storage:

Preservative: 0.03% Proclin 300. Constituents: 50% Glycerol, 0.01M PBS, PH 7.4

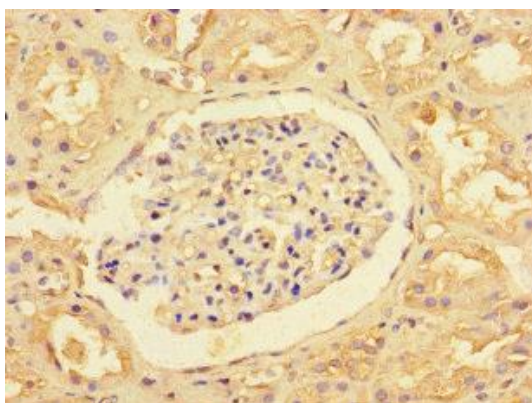
Product Images



Immunofluorescent analysis of MCF-7 cells using PACO39074 at dilution of 1:100 and Alexa Fluor 488-conjugated AffiniPure Goat Anti-Rabbit IgG(H+L).



Immunohistochemistry of paraffin-embedded human lung tissue using PACO39074 at dilution of 1:100.



Immunohistochemistry of paraffin-embedded human kidney tissue using PACO39074 at dilution of 1:100.