

PPP1R16B Antibody



PACO39054

Product Information

Size:

50ug

Reactivity:

Human

Source:

Rabbit

Isotype:

IgG

Applications:

ELISA, IHC

Recommended dilutions:

ELISA:1:2000-1:10000, IHC:1:20-1:200

Protein Background:

Regulator of protein phosphatase 1 (PP1) that acts as a positive regulator of pulmonary endothelial cell (EC) barrier function. Involved in PKA-mediated moesin dephosphorylation which is important in EC barrier protection against thrombin stimulation. Promotes the interaction of PPP1CA with RPSA/LAMR1 and in turn facilitates the dephosphorylation of RPSA/LAMR1. Involved in the regulation of endothelial cell filopodia extension. May be a downstream target for TGF-beta1 signaling cascade in endothelial cells.

Gene ID:

PPP1R16B

Uniprot

Q96T49

Synonyms:

Protein phosphatase 1 regulatory inhibitor subunit 16B (Ankyrin repeat domain-containing protein 4) (CAAX box protein TIMAP) (TGF-beta-inhibited membrane-associated protein) (hTIMAP), PPP1R16B, ANKRD4 KIAA0823

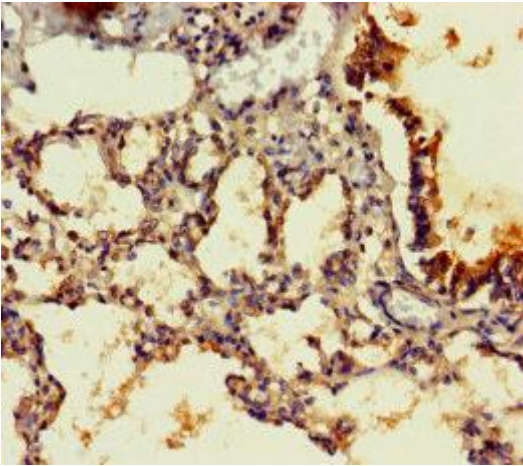
Immunogen:

Recombinant Human Protein phosphatase 1 regulatory inhibitor subunit 16B protein (101-400AA).

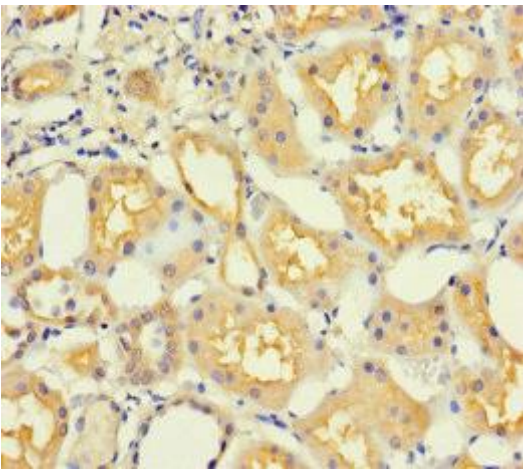
Storage:

Preservative: 0.03% Proclin 300. Constituents: 50% Glycerol, 0.01M PBS, PH 7.4

Product Images



Immunohistochemistry of paraffin-embedded human lung tissue using PACO39054 at dilution of 1:100.



Immunohistochemistry of paraffin-embedded human kidney tissue using PACO39054 at dilution of 1:100.