

# RASL10B Antibody



PACO39050

---

## Product Information

**Size:**

50ug

**Reactivity:**

Human

**Source:**

Rabbit

**Isotype:**

IgG

**Applications:**

ELISA, IHC

**Recommended dilutions:**

ELISA:1:2000-1:10000, IHC:1:20-1:200

**Protein Background:**

May facilitate the release of atrial natriuretic peptide by cardiomyocytes and hence play a role in the regulation of arterial pressure.

**Gene ID:**

RASL10B

**Uniprot**

Q96S79

**Synonyms:**

Ras-like protein family member 10B (Ras-like protein VTS58635) (Ras-related protein 17) (RRP17), RASL10B

**Immunogen:**

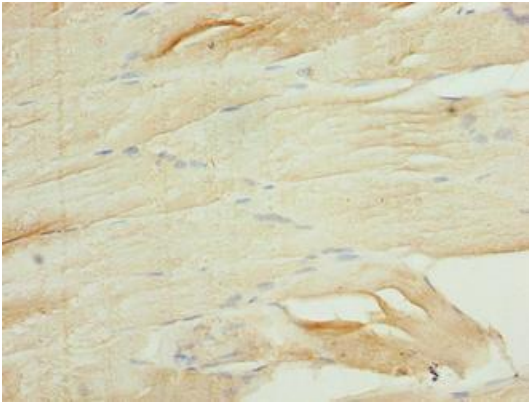
Recombinant Human Ras-like protein family member 10B protein (15-200AA).

**Storage:**

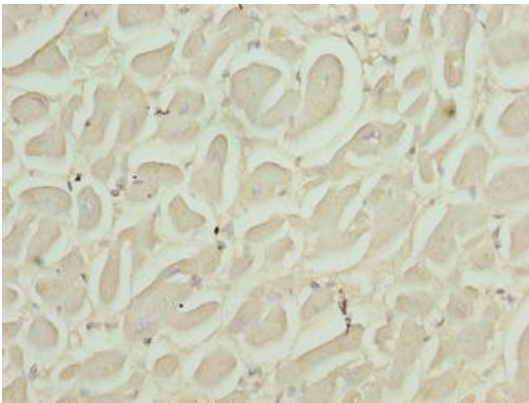
Preservative: 0.03% Proclin 300. Constituents: 50% Glycerol, 0.01M PBS, PH 7.4

## Product Images

---



Immunohistochemistry of paraffin-embedded human skeletal muscle tissue using PACO39050 at dilution of 1:100.



Immunohistochemistry of paraffin-embedded human heart tissue using PACO39050 at dilution of 1:100.