

PACO39030

Product Information

Size:

50ug

Reactivity:

Human

Source:

Rabbit

Isotype:

IgG

Applications:

ELISA, IHC

Recommended dilutions:

ELISA:1:2000-1:10000, IHC:1:20-1:200

Protein Background:

Exhibits an oxidoreductive catalytic activity towards retinoids. Most efficient as an NADPH-dependent retinal reductase. Displays high activity toward 9-cis and all-trans-retinol. Also involved in the metabolism of short-chain aldehydes. No steroid dehydrogenase activity detected. Might be the key enzyme in the formation of 11-cis-retinal from 11-cis-retinol during regeneration of the cone visual pigments.

Gene ID:

RDH12

Uniprot

Q96NR8

Synonyms:

Retinol dehydrogenase 12 (EC 1.1.1. -) (All-trans and 9-cis retinol dehydrogenase) (Short chain dehydrogenase/reductase family 7C member 2), RDH12, SDR7C2

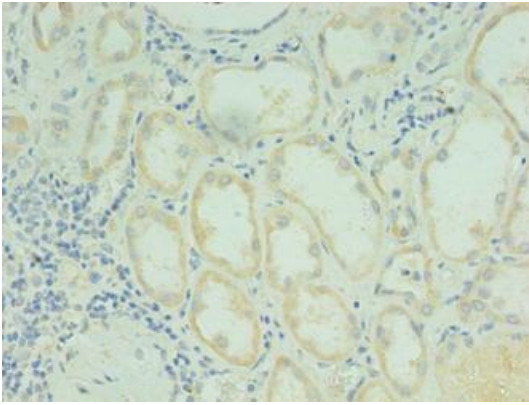
Immunogen:

Recombinant Human Retinol dehydrogenase 12 protein (1-316AA).

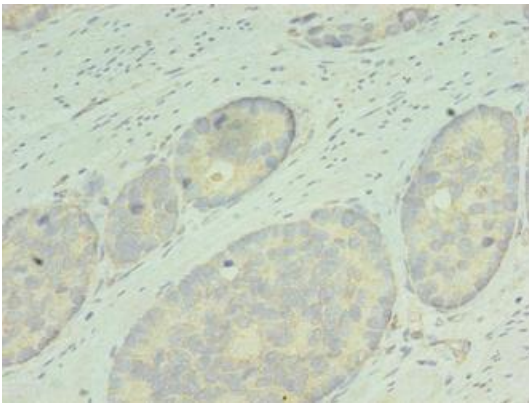
Storage:

Preservative: 0.03% Proclin 300. Constituents: 50% Glycerol, 0.01M PBS, PH 7.4

Product Images



Immunohistochemistry of paraffin-embedded human kidney tissue using PACO39030 at dilution of 1:100.



Immunohistochemistry of paraffin-embedded human gastric cancer using PACO39030 at dilution of 1:100.