

# WDR89 Antibody



PACO38978

---

## Product Information

**Size:**

50ug

**Reactivity:**

Human

**Source:**

Rabbit

**Isotype:**

IgG

**Applications:**

ELISA, IHC

**Recommended dilutions:**

ELISA:1:2000-1:10000, IHC:1:20-1:200

**Protein Background:**

**Gene ID:**

WDR89

**Uniprot**

Q96FK6

**Synonyms:**

WD repeat-containing protein 89, WDR89, C14orf150

**Immunogen:**

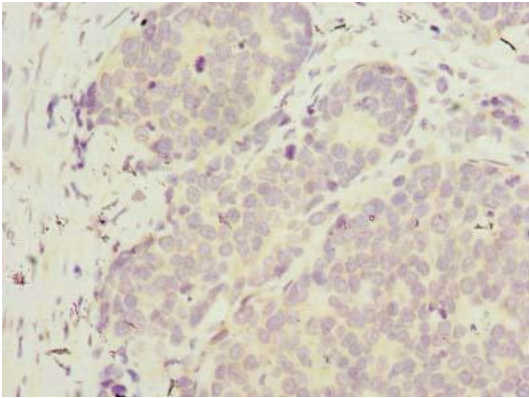
Recombinant Human WD repeat-containing protein 89 protein (1-387AA).

**Storage:**

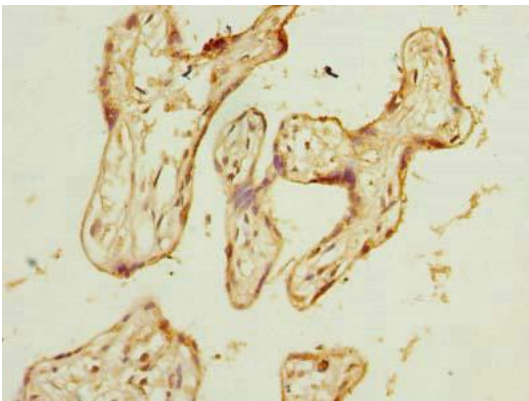
Preservative: 0.03% Proclin 300. Constituents: 50% Glycerol, 0.01M PBS, PH 7.4

## Product Images

---



Immunohistochemistry of paraffin-embedded human gastric cancer using PACO38978 at dilution of 1:100.



Immunohistochemistry of paraffin-embedded human placenta tissue using PACO38978 at dilution of 1:100.