

ZBED6CL Antibody



PACO38974

Product Information

Size:

50ug

Reactivity:

Human

Source:

Rabbit

Isotype:

IgG

Applications:

ELISA, IHC

Recommended dilutions:

ELISA:1:2000-1:10000, IHC:1:20-1:200

Protein Background:

Gene ID:

ZBED6CL

Uniprot

Q96FA7

Synonyms:

ZBED6 C-terminal-like protein, ZBED6CL, C7orf29

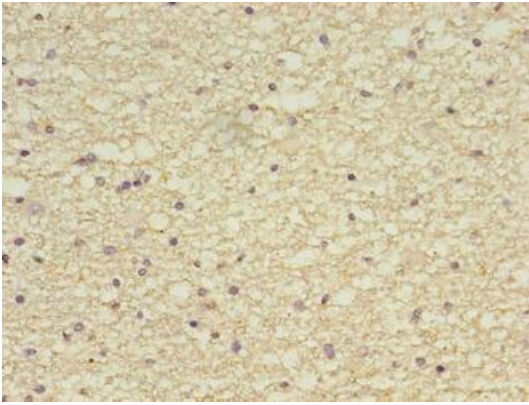
Immunogen:

Recombinant Human ZBED6 C-terminal-like protein (1-236AA).

Storage:

Preservative: 0.03% Proclin 300. Constituents: 50% Glycerol, 0.01M PBS, PH 7.4

Product Images



Immunohistochemistry of paraffin-embedded human brain tissue using PACO38974 at dilution of 1:100.