

WDR34 Antibody



PACO38970

Product Information

Size:

50ug

Reactivity:

Human

Source:

Rabbit

Isotype:

IgG

Applications:

ELISA, WB, IHC

Recommended dilutions:

ELISA:1:2000-1:10000, WB:1:1000-1:5000,
IHC:1:20-1:200

Protein Background:

Critical for ciliary functions, essential to normal development and survival, most probably as a previously unrecognized component of the mammalian dynein-motor-based intraflagellar transport (IFT) machinery. Acts as a negative regulator of the Toll-like and IL-1R receptor signaling pathways. Inhibits the MAP3K7-induced NF-kappa-B activation pathway. Inhibits MAP3K7 phosphorylation at 'Thr-184' and 'Thr-187' upon IL-1 beta stimulation.

Gene ID:

WDR34

Uniprot

Q96EX3

Synonyms:

WD repeat-containing protein 34, WDR34

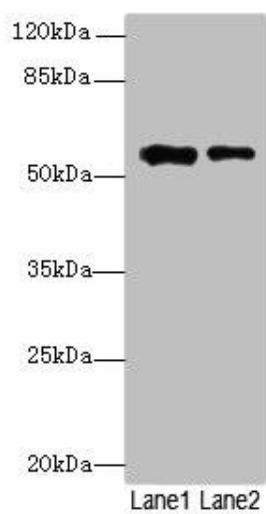
Immunogen:

Recombinant Human WD repeat-containing protein 34 protein (1-210AA).

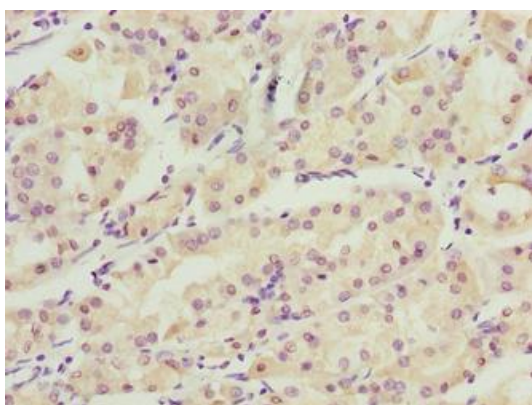
Storage:

Preservative: 0.03% Proclin 300. Constituents: 50% Glycerol, 0.01M PBS, PH 7.4

Product Images



Western blot. All lanes: WDR34 antibody at 1.5 μ g/ml. Lane 1: PC-3 whole cell lysate. Lane 2: MDA-MB-231 whole cell lysate. Secondary. Goat polyclonal to rabbit IgG at 1/10000 dilution. Predicted band size: 58 kDa. Observed band size: 58 kDa.



Immunohistochemistry of paraffin-embedded human gastric cancer using PACO38970 at dilution of 1:100.