

# RTP4 Antibody



PACO38958

---

## Product Information

**Size:**

50ug

**Reactivity:**

Human, Mouse

**Source:**

Rabbit

**Isotype:**

IgG

**Applications:**

ELISA, WB, IHC

**Recommended dilutions:**

ELISA:1:2000-1:10000, WB:1:500-1:2000,  
IHC:1:20-1:200

**Protein Background:**

Probable chaperone protein which facilitates trafficking and functional cell surface expression of some G-protein coupled receptors (GPCRs). Promotes functional expression of the bitter taste receptor TAS2R16. Also promotes functional expression of the opioid receptor heterodimer OPRD1-OPRM1.

**Gene ID:**

RTP4

**Uniprot**

Q96DX8

**Synonyms:**

Receptor-transporting protein 4 (28 kDa interferon-responsive protein) (3CxxC-type zinc finger protein 4), RTP4, IFRG28 Z3CXXC4

**Immunogen:**

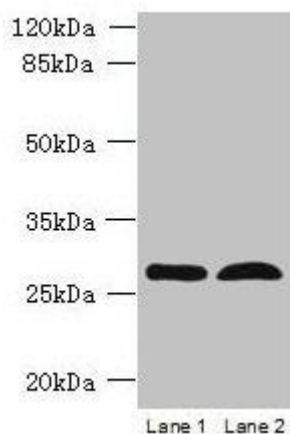
Recombinant Human Receptor-transporting protein 4 protein (1-224AA).

**Storage:**

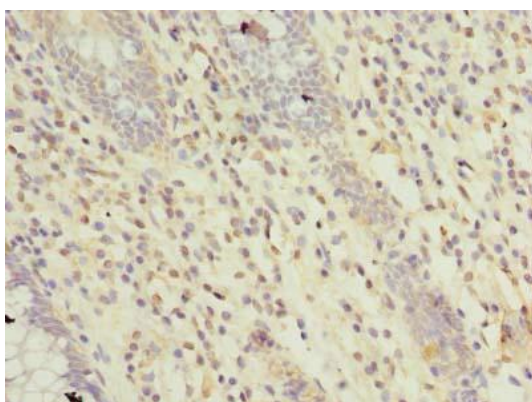
Preservative: 0.03% Proclin 300. Constituents: 50% Glycerol, 0.01M PBS, PH 7.4

## Product Images

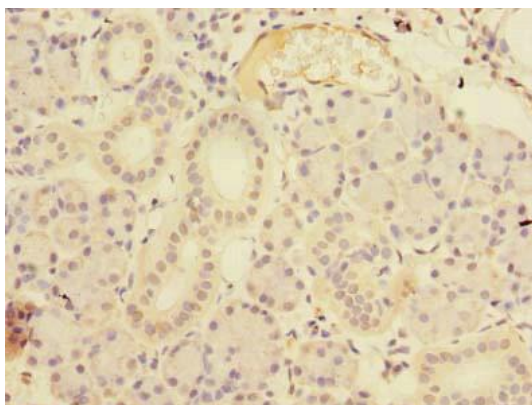
---



Western blot. All lanes: RTP4 antibody at 5 $\mu$ g/ml. Lane 1: K562 whole cell lysate. Lane 2: Mouse thymus tissue. Secondary: Goat polyclonal to rabbit IgG at 1/10000 dilution. Predicted band size: 28 kDa. Observed band size: 28 kDa.



Immunohistochemistry of paraffin-embedded human colon cancer using PACO38958 at dilution of 1:100.



Immunohistochemistry of paraffin-embedded human pancreatic tissue using PACO38958 at dilution of 1:100.