

CCDC127 Antibody



PACO38938

Product Information

Size:

50ug

Reactivity:

Human, Mouse

Source:

Rabbit

Isotype:

IgG

Applications:

ELISA, WB

Recommended dilutions:

ELISA:1:2000-1:10000, WB:1:500-1:2000

Protein Background:

Gene ID:

CCDC127

Uniprot

Q96BQ5

Synonyms:

Coiled-coil domain-containing protein 127, CCDC127

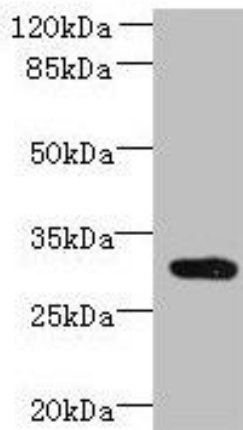
Immunogen:

Recombinant Human Coiled-coil domain-containing protein 127 protein (1-260AA).

Storage:

Preservative: 0.03% Proclin 300. Constituents: 50% Glycerol, 0.01M PBS, PH 7.4

Product Images



Western blot. All lanes: CCDC127 antibody at 6 μ g/ml + Mouse kidney tissue. Secondary. Goat polyclonal to rabbit IgG at 1/10000 dilution. Predicted band size: 31 kDa. Observed band size: 31 kDa.