

PACO38914

Product Information

Size:

50ug

Reactivity:

Human

Source:

Rabbit

Isotype:

IgG

Applications:

ELISA, WB, IHC, IF

Recommended dilutions:

ELISA:1:2000-1:10000, WB:1:500-1:2000,
IHC:1:20-1:200, IF:1:50-1:200

Protein Background:

Possible role in transport between endoplasmic reticulum and Golgi.

Gene ID:

ERGIC1

Uniprot

Q969X5

Synonyms:

Endoplasmic reticulum-Golgi intermediate compartment protein 1 (ER-Golgi intermediate compartment 32 kDa protein) (ERGIC-32), ERGIC1, ERGIC32 KIAA1181

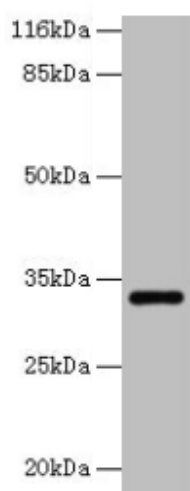
Immunogen:

Recombinant Human Endoplasmic reticulum-Golgi intermediate compartment protein 1 protein (48-254AA).

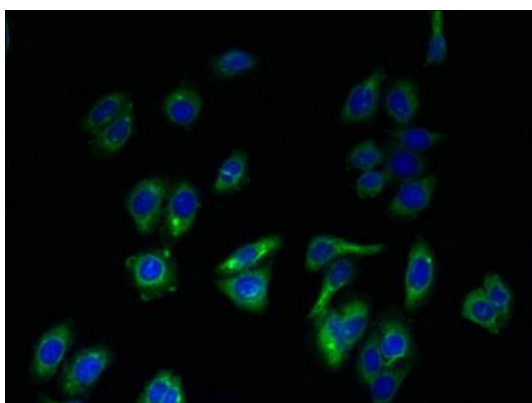
Storage:

Preservative: 0.03% Proclin 300. Constituents: 50% Glycerol, 0.01M PBS, PH 7.4

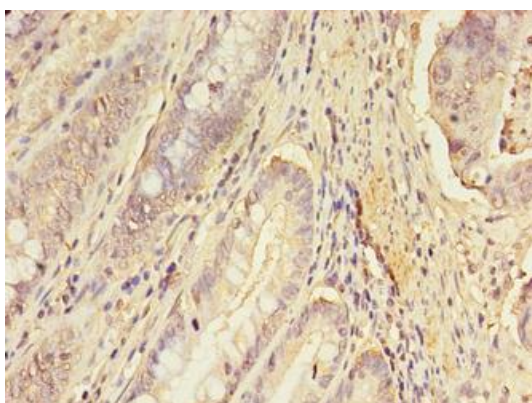
Product Images



Western blot. All lanes: ERGIC1 antibody at 2 μ g/ml + HepG2 whole cell lysate. Secondary. Goat polyclonal to rabbit IgG at 1/10000 dilution. Predicted band size: 33, 23, 18 kDa. Observed band size: 33 kDa.



Immunofluorescent analysis of HepG2 cells using PACO38914 at dilution of 1:100 and Alexa Fluor 488-conjugated AffiniPure Goat Anti-Rabbit IgG(H+L).



Immunohistochemistry of paraffin-embedded human colon cancer using PACO38914 at dilution of 1:100.