

PACO38906

Product Information

Size:

50ug

Reactivity:

Human, Mouse

Source:

Rabbit

Isotype:

IgG

Applications:

ELISA, WB, IF

Recommended dilutions:

ELISA:1:2000-1:10000, WB:1:1000-1:5000,
IF:1:50-1:200

Protein Background:

Plays a role in transport between endoplasmic reticulum and Golgi.

Gene ID:

YIPF5

Uniprot

Q969M3

Synonyms:

Protein YIPF5 (Five-pass transmembrane protein localizing in the Golgi apparatus and the endoplasmic reticulum 5) (Smooth muscle cell-associated protein 5) (SMAP-5) (YIP1 family member 5) (YPT-interacting protein 1 A), YIPF5, FINGER5 YIP1A

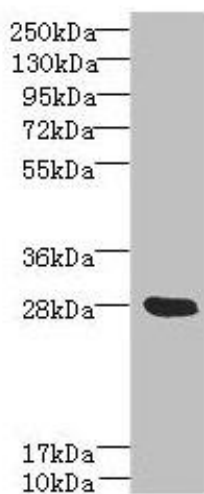
Immunogen:

Recombinant Human Protein YIPF5 protein (1-124AA).

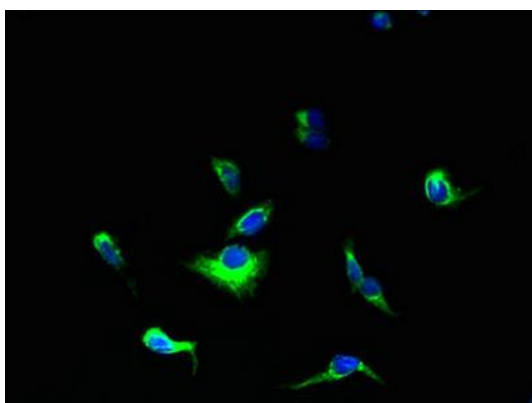
Storage:

Preservative: 0.03% Proclin 300. Constituents: 50% Glycerol, 0.01M PBS, PH 7.4

Product Images



Western blot. All lanes: YIPF5 antibody at 5 μ g/ml + Mouse liver tissue. Secondary. Goat polyclonal to rabbit IgG at 1/10000 dilution. Predicted band size: 28, 22, 30 kDa. Observed band size: 28 kDa.



Immunofluorescent analysis of HepG2 cells using PACO38906 at dilution of 1:100 and Alexa Fluor 488-conjugated AffiniPure Goat Anti-Rabbit IgG(H+L).