

# SMPDL3A Antibody



PACO38890

---

## Product Information

**Size:**

50ug

**Reactivity:**

Human

**Source:**

Rabbit

**Isotype:**

IgG

**Applications:**

ELISA, IHC

**Recommended dilutions:**

ELISA:1:2000-1:10000, IHC:1:20-1:200

**Protein Background:**

extracellular exosome.

**Gene ID:**

SMPDL3A

**Uniprot**

Q92484

**Synonyms:**

acid, sphingomyelinase-like phosphodiesterase 3a (ASM-like phosphodiesterase 3a) (EC 3.1.4. -), SMPDL3A, ASML3A

**Immunogen:**

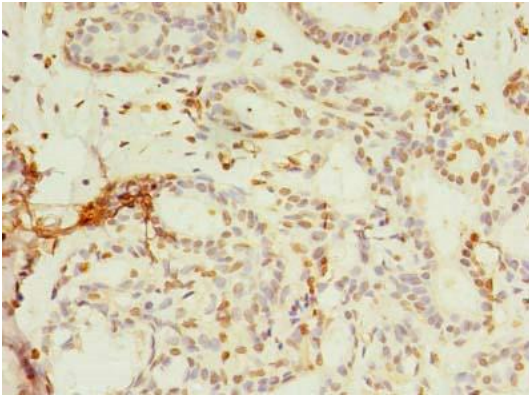
Recombinant Human acid, sphingomyelinase-like phosphodiesterase 3a protein (51-350AA).

**Storage:**

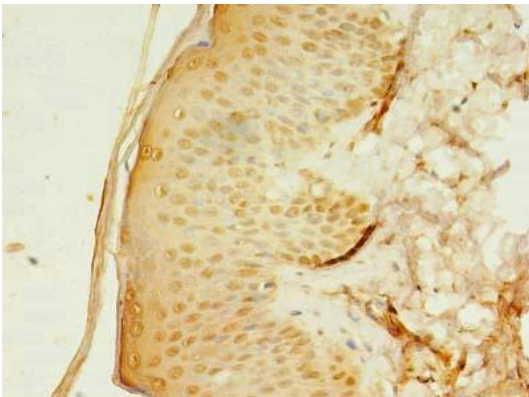
Preservative: 0.03% Proclin 300. Constituents: 50% Glycerol, 0.01M PBS, PH 7.4

## Product Images

---



Immunohistochemistry of paraffin-embedded human breast cancer using PACO38890 at dilution of 1:100.



Immunohistochemistry of paraffin-embedded human skin tissue using PACO38890 at dilution of 1:100.