

# CLEC4D Antibody



PACO38882

---

## Product Information

**Size:**

50ug

**Reactivity:**

Human

**Source:**

Rabbit

**Isotype:**

IgG

**Applications:**

ELISA, IHC

**Recommended dilutions:**

ELISA:1:2000-1:10000, IHC:1:20-1:200

**Protein Background:**

Functions as an endocytic receptor. May be involved in antigen uptake at the site of infection, either for clearance of the antigen, or for processing and further presentation to T cells.

**Gene ID:**

CLEC4D

**Uniprot**

Q8WXI8

**Synonyms:**

C-type lectin domain family 4 member D (C-type lectin superfamily member 8) (C-type lectin-like receptor 6) (CLEC-6), CLEC4D, CLECSF8 MCL

**Immunogen:**

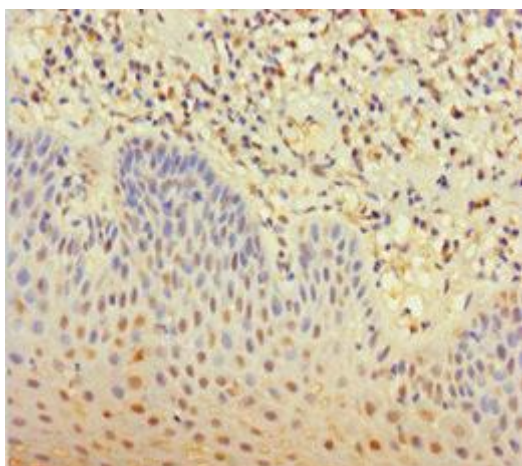
Recombinant Human C-type lectin domain family 4 member D protein (39-215AA).

**Storage:**

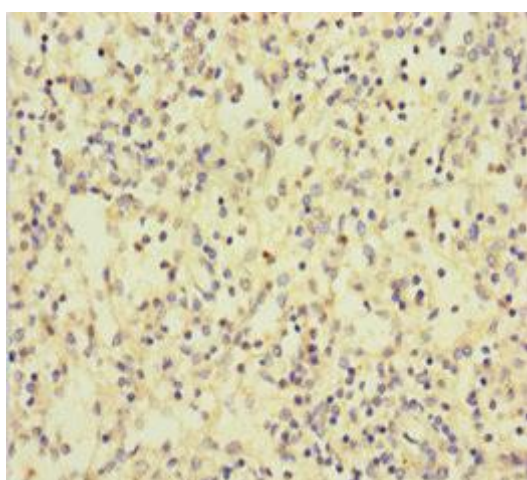
Preservative: 0.03% Proclin 300. Constituents: 50% Glycerol, 0.01M PBS, PH 7.4

## Product Images

---



Immunohistochemistry of paraffin-embedded human tonsil tissue using PACO38882 at dilution of 1:100.



Immunohistochemistry of paraffin-embedded human spleen tissue using PACO38882 at dilution of 1:100.