

# UTP15 Antibody



PACO38838

---

## Product Information

**Size:**

50ug

**Reactivity:**

Human

**Source:**

Rabbit

**Isotype:**

IgG

**Applications:**

ELISA, WB

**Recommended dilutions:**

ELISA:1:2000-1:10000, WB:1:500-1:2000

**Protein Background:**

Involved in nucleolar processing of pre-18S ribosomal RNA.

**Gene ID:**

UTP15

**Uniprot**

Q8TED0

**Synonyms:**

U3 small nucleolar RNA-associated protein 15 homolog, UTP15

**Immunogen:**

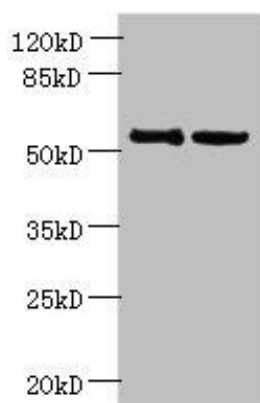
Recombinant Human U3 small nucleolar RNA-associated protein 15 homolog protein (234-518AA).

**Storage:**

Preservative: 0.03% Proclin 300. Constituents: 50% Glycerol, 0.01M PBS, PH 7.4

## Product Images

---



Western blot. All lanes: UTP15 antibody at 5 $\mu$ g/ml. Lane 1: HeLa whole cell lysate. Lane 2: HepG2 whole cell lysate. Secondary. Goat polyclonal to rabbit IgG at 1/10000 dilution. Predicted band size: 59, 37, 57 kDa. Observed band size: 59 kDa.