

# OR5L1 Antibody



PACO38822

---

## Product Information

**Size:**

50ug

**Reactivity:**

Human

**Source:**

Rabbit

**Isotype:**

IgG

**Applications:**

ELISA, IHC

**Recommended dilutions:**

ELISA:1:2000-1:10000, IHC:1:20-1:200

**Protein Background:**

Odorant receptor.

**Gene ID:**

OR5L1

**Uniprot**

Q8NGL2

**Synonyms:**

Olfactory receptor 5L1 (OST262) (Olfactory receptor OR11-151), OR5L1

**Immunogen:**

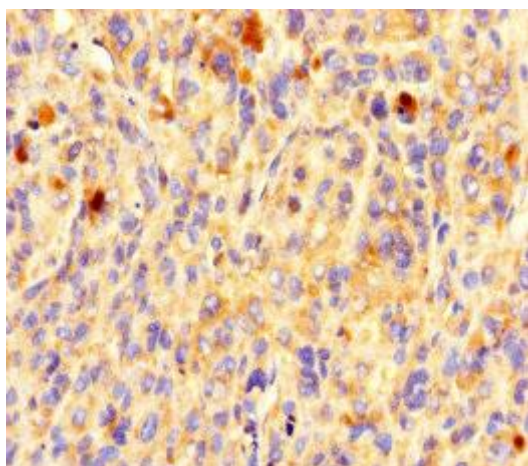
Recombinant Human Olfactory receptor 5L1 protein (161-196AA).

**Storage:**

Preservative: 0.03% Proclin 300. Constituents: 50% Glycerol, 0.01M PBS, PH 7.4

## Product Images

---



Immunohistochemistry of paraffin-embedded human melanoma using PACO38822 at dilution of 1:100.