

USHBP1 Antibody



PACO38806

Product Information

Size:

50ug

Reactivity:

Human

Source:

Rabbit

Isotype:

IgG

Applications:

ELISA, IHC, IF

Recommended dilutions:

ELISA:1:2000-1:10000, IHC:1:20-1:200,
IF:1:50-1:200

Protein Background:

PDZ domain binding.

Gene ID:

USHBP1

Uniprot

Q8N6Y0

Synonyms:

Usher syndrome type-1C protein-binding protein 1 (USH1C-binding protein 1) (AIE-75-binding protein) (MCC-2) (Mutated in colon cancer protein 2), USHBP1, AIEBP MCC2

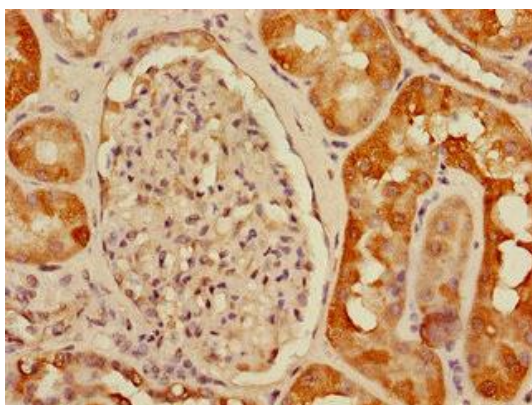
Immunogen:

Recombinant Human Usher syndrome type-1C protein-binding protein 1 protein (1-260AA).

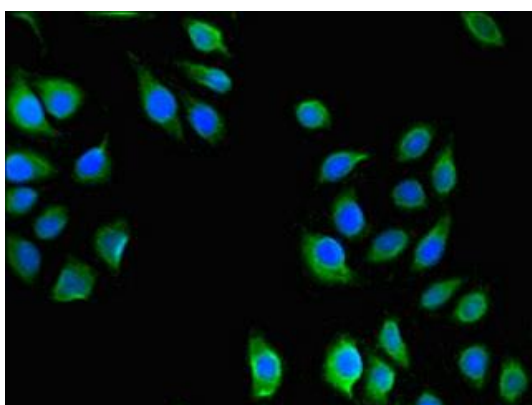
Storage:

Preservative: 0.03% Proclin 300. Constituents: 50% Glycerol, 0.01M PBS, PH 7.4

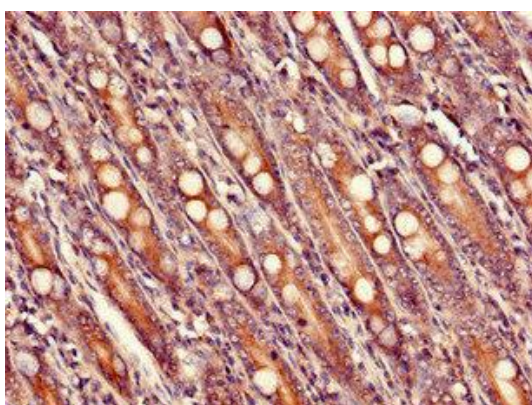
Product Images



Immunohistochemistry of paraffin-embedded human kidney tissue using PACO38806 at dilution of 1:100.



Immunofluorescent analysis of A549 cells using PACO38806 at dilution of 1:100 and Alexa Fluor 488-conjugated AffiniPure Goat Anti-Rabbit IgG(H+L).



Immunohistochemistry of paraffin-embedded human small intestine tissue using PACO38806 at dilution of 1:100.