

# METTL25 Antibody



PACO38802

---

## Product Information

**Size:**

50ug

**Reactivity:**

Human

**Source:**

Rabbit

**Isotype:**

IgG

**Applications:**

ELISA, IHC

**Recommended dilutions:**

ELISA:1:2000-1:10000, IHC:1:20-1:200

**Protein Background:**

Putative methyltransferase.

**Gene ID:**

METTL25

**Uniprot**

Q8N6Q8

**Synonyms:**

Methyltransferase-like protein 25 (EC 2.1.1. -), METTL25, C12orf26

**Immunogen:**

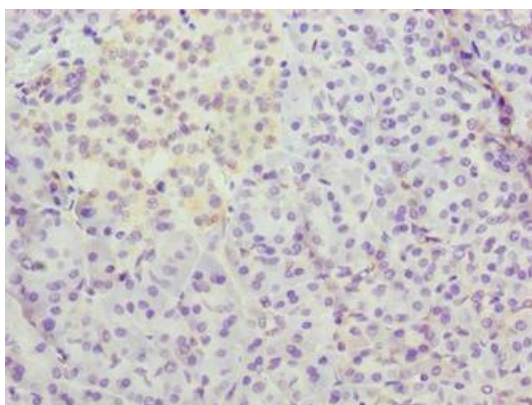
Recombinant Human Methyltransferase-like protein 25 protein (206-455AA).

**Storage:**

Preservative: 0.03% Proclin 300. Constituents: 50% Glycerol, 0.01M PBS, PH 7.4

## Product Images

---



Immunohistochemistry of paraffin-embedded human pancreatic tissue using PACO38802 at dilution of 1:100.