

LRRC18 Antibody



PACO38790

Product Information

Size:

50ug

Reactivity:

Human

Source:

Rabbit

Isotype:

IgG

Applications:

ELISA, IHC

Recommended dilutions:

ELISA:1:2000-1:10000, IHC:1:20-1:200

Protein Background:

May be involved in the regulation of spermatogenesis and sperm maturation.

Gene ID:

LRRC18

Uniprot

Q8N456

Synonyms:

Leucine-rich repeat-containing protein 18, LRRC18

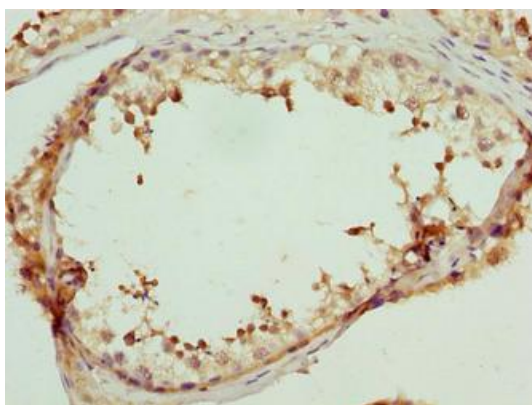
Immunogen:

Recombinant Human Leucine-rich repeat-containing protein 18 protein (1-261AA).

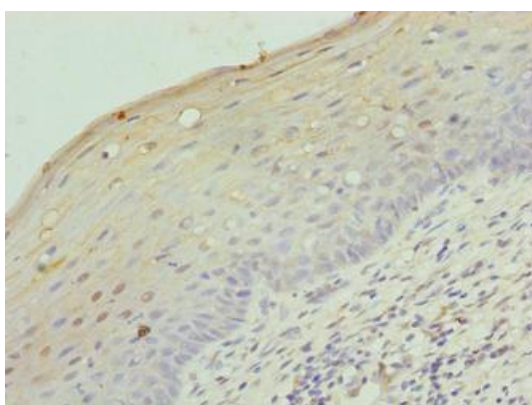
Storage:

Preservative: 0.03% Proclin 300. Constituents: 50% Glycerol, 0.01M PBS, PH 7.4

Product Images



Immunohistochemistry of paraffin-embedded human testis tissue using PACO38790 at dilution of 1:100.



Immunohistochemistry of paraffin-embedded human cervical cancer using PACO38790 at dilution of 1:100.