

# LLCFC1 Antibody



PACO38742

---

## Product Information

**Size:**

50ug

**Reactivity:**

Human

**Source:**

Rabbit

**Isotype:**

IgG

**Applications:**

ELISA, WB, IHC

**Recommended dilutions:**

ELISA:1:2000-1:10000, WB:1:1000-1:5000,  
IHC:1:20-1:200

**Protein Background:**

**Gene ID:**

LLCFC1

**Uniprot**

Q96L11

**Synonyms:**

LLLL and CFNLAS motif-containing protein 1 (MSSP-binding protein CTM-1), LLCFC1, C7orf34

**Immunogen:**

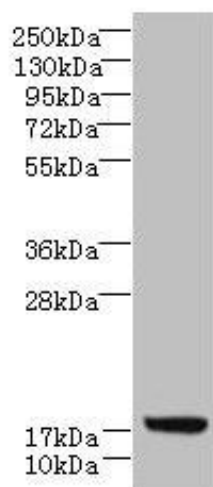
Recombinant Human LLLL and CFNLAS motif-containing protein 1 protein (29-122AA).

**Storage:**

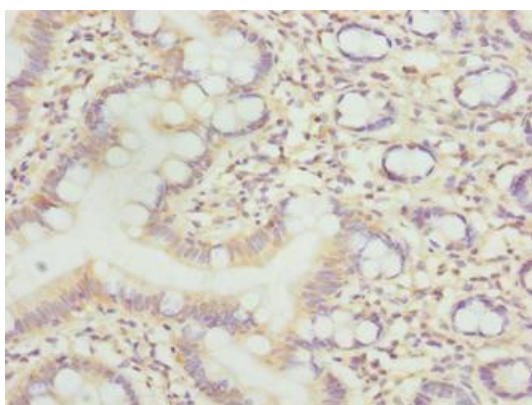
Preservative: 0.03% Proclin 300. Constituents: 50% Glycerol, 0.01M PBS, PH 7.4

## Product Images

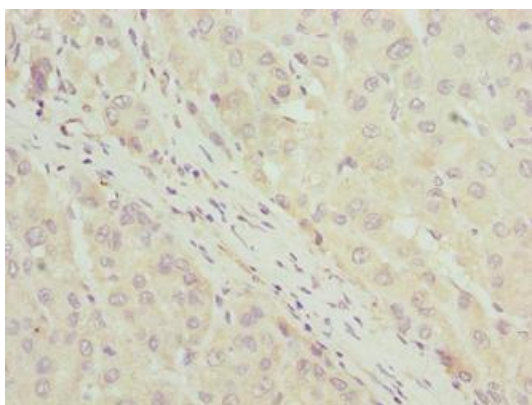
---



Western blot. All lanes: LLCFC1 antibody at 3.5 $\mu$ g/ml + K562 whole cell lysate. Secondary. Goat polyclonal to rabbit IgG at 1/10000 dilution. Predicted band size: 14, 5, 17 kDa. Observed band size: 17 kDa.



Immunohistochemistry of paraffin-embedded human small intestine tissue using PACO38742 at dilution of 1:100.



Immunohistochemistry of paraffin-embedded human liver cancer using PACO38742 at dilution of 1:100.