

CPNE2 Antibody



PACO38718

Product Information

Size:

50ug

Reactivity:

Human

Source:

Rabbit

Isotype:

IgG

Applications:

ELISA, IHC

Recommended dilutions:

ELISA:1:2000-1:10000, IHC:1:20-1:200

Protein Background:

Calcium-dependent phospholipid-binding protein that plays a role in calcium-mediated intracellular processes. Exhibits calcium-dependent cell membrane binding properties.

Gene ID:

CPNE2

Uniprot

Q96FN4

Synonyms:

Copine-2 (Copine II), CPNE2

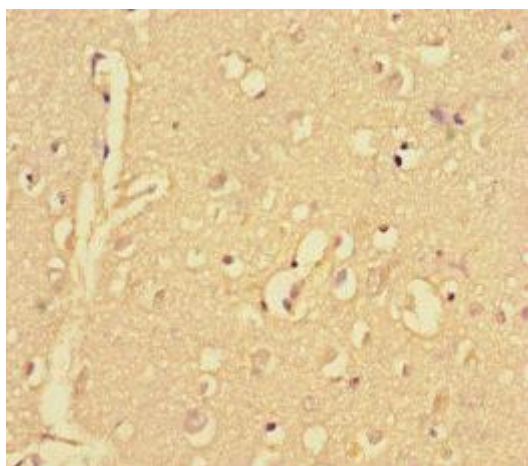
Immunogen:

Recombinant Human Copine-2 protein (1-300AA).

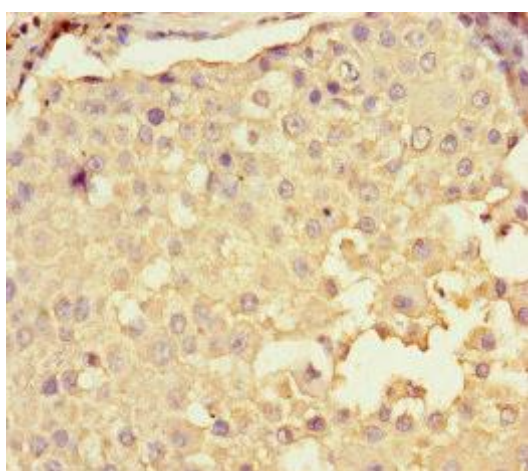
Storage:

Preservative: 0.03% Proclin 300. Constituents: 50% Glycerol, 0.01M PBS, PH 7.4

Product Images



Immunohistochemistry of paraffin-embedded human brain tissue using PACO38718 at dilution of 1:100.



Immunohistochemistry of paraffin-embedded human breast cancer using PACO38718 at dilution of 1:100.