

KCTD4 Antibody



PACO38630

Product Information

Size:

50ug

Reactivity:

Human

Source:

Rabbit

Isotype:

IgG

Applications:

ELISA, IHC

Recommended dilutions:

ELISA:1:2000-1:10000, IHC:1:20-1:200

Protein Background:

Gene ID:

KCTD4

Uniprot

Q8WVF5

Synonyms:

BTB/POZ domain-containing protein KCTD4, KCTD4

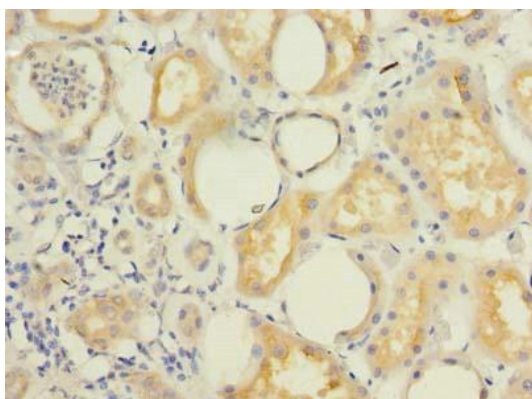
Immunogen:

Recombinant Human BTB/POZ domain-containing protein KCTD4 protein (1-259AA).

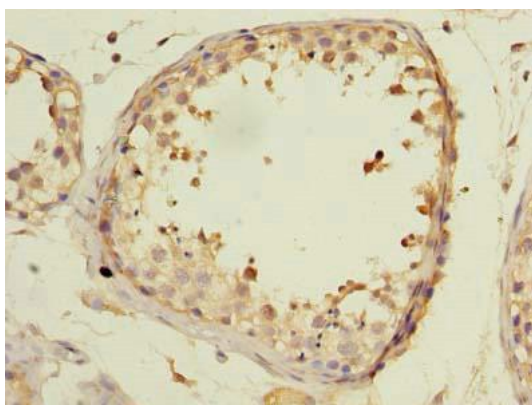
Storage:

Preservative: 0.03% Proclin 300. Constituents: 50% Glycerol, 0.01M PBS, PH 7.4

Product Images



Immunohistochemistry of paraffin-embedded human kidney tissue using PACO38630 at dilution of 1:100.



Immunohistochemistry of paraffin-embedded human testis tissue using PACO38630 at dilution of 1:100.