

SLC38A5 Antibody



PACO38626

Product Information

Size:

50ug

Reactivity:

Human

Source:

Rabbit

Isotype:

IgG

Applications:

ELISA, IF

Recommended dilutions:

ELISA:1:2000-1:10000, IF:1:50-1:200

Protein Background:

Functions as a sodium-dependent amino acid, transporter which countertransport protons. Mediates the saturable, pH-sensitive, and electrogenic cotransport of several neutral amino acid, including glycine, asparagine, alanine, serine, glutamine and histidine with sodium.

Gene ID:

SLC38A5

Uniprot

Q8WUX1

Synonyms:

Sodium-coupled neutral amino acid, transporter 5 (Solute carrier family 38 member 5) (System N transporter 2), SLC38A5, JM24 SN2 SNAT5

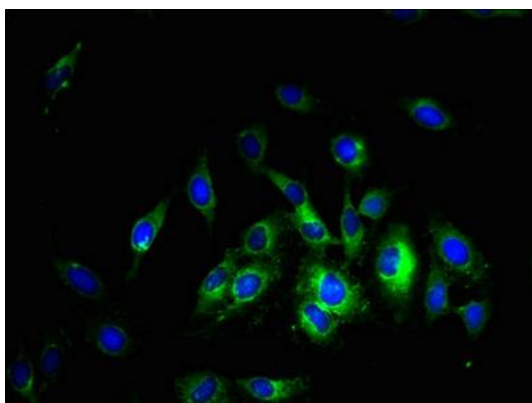
Immunogen:

Recombinant Human Sodium-coupled neutral amino acid, transporter 5 protein (1-48AA).

Storage:

Preservative: 0.03% Proclin 300. Constituents: 50% Glycerol, 0.01M PBS, PH 7.4

Product Images



Immunofluorescent analysis of HeLa cells using PACO38626 at dilution of 1:100 and Alexa Fluor 488-conjugated AffiniPure Goat Anti-Rabbit IgG(H+L).