

BLOC1S5 Antibody



PACO38606

Product Information

Size:

50ug

Reactivity:

Human

Source:

Rabbit

Isotype:

IgG

Applications:

ELISA, IHC

Recommended dilutions:

ELISA:1:2000-1:10000, IHC:1:20-1:200

Protein Background:

Component of the BLOC-1 complex, a complex that is required for normal biogenesis of lysosome-related organelles (LRO), such as platelet dense granules and melanosomes. In concert with the AP-3 complex, the BLOC-1 complex is required to target membrane protein cargos into vesicles assembled at cell bodies for delivery into neurites and nerve terminals. The BLOC-1 complex, in association with SNARE proteins, is also proposed to be involved in neurite extension. Plays a role in intracellular vesicle trafficking.

Gene ID:

BLOC1S5

Uniprot

Q8TDH9

Synonyms:

Biogenesis of lysosome-related organelles complex 1 subunit 5 (BLOC-1 subunit 5) (Protein Muted homolog), BLOC1S5, MUTED

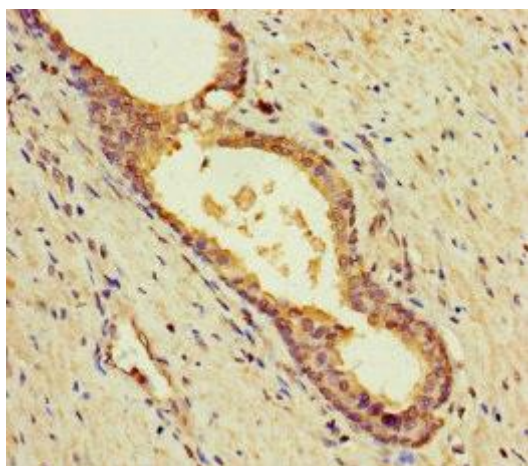
Immunogen:

Recombinant Human Biogenesis of lysosome-related organelles complex 1 subunit 5 protein (2-187AA).

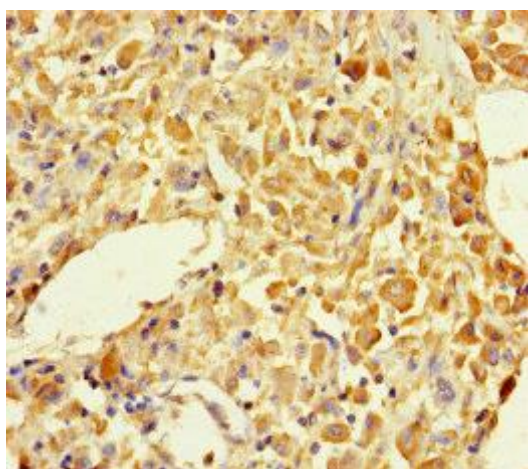
Storage:

Preservative: 0.03% Proclin 300. Constituents: 50% Glycerol, 0.01M PBS, PH 7.4

Product Images



Immunohistochemistry of paraffin-embedded human prostate cancer using PACO38606 at dilution of 1:100.



Immunohistochemistry of paraffin-embedded human melanoma using PACO38606 at dilution of 1:100.