

# NUP35 Antibody



PACO38582

---

## Product Information

**Size:**

50ug

**Reactivity:**

Human

**Source:**

Rabbit

**Isotype:**

IgG

**Applications:**

ELISA, WB

**Recommended dilutions:**

ELISA:1:2000-1:10000, WB:1:1000-1:5000

**Protein Background:**

Functions as a component of the nuclear pore complex (NPC). NPC components, collectively referred to as nucleoporins (NUPs). Can play the role of both NPC structural components and of docking or interaction partners for transiently associated nuclear transport factors. May play a role in the association of MAD1 with the NPC.

**Gene ID:**

NUP35

**Uniprot**

Q8NFH5

**Synonyms:**

Nucleoporin NUP53 (35 kDa nucleoporin) (Mitotic phosphoprotein 44) (MP-44) (Nuclear pore complex protein Nup53) (Nucleoporin Nup35), NUP35, MP44 NUP53

**Immunogen:**

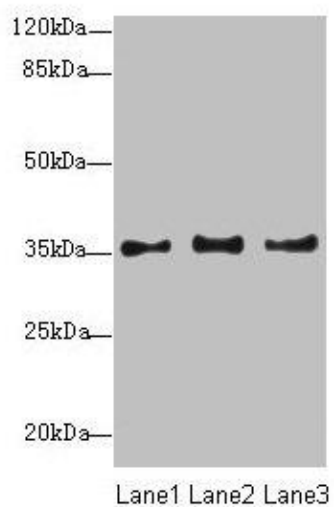
Recombinant Human Nucleoporin NUP53 protein (6-305AA).

**Storage:**

Preservative: 0.03% Proclin 300. Constituents: 50% Glycerol, 0.01M PBS, PH 7.4

## Product Images

---



Western blot. All lanes: NUP35 antibody at 12 $\mu$ g/ml. Lane 1: Jurkat whole cell lysate. Lane 2: A431 whole cell lysate. Lane 3: HepG2 whole cell lysate. Secondary. Goat polyclonal to rabbit IgG at 1/10000 dilution. Predicted band size: 35, 34, 22 kDa. Observed band size: 35 kDa.