

# CCDC150 Antibody



PACO38566

---

## Product Information

**Size:**

50ug

**Reactivity:**

Human

**Source:**

Rabbit

**Isotype:**

IgG

**Applications:**

ELISA, IHC

**Recommended dilutions:**

ELISA:1:2000-1:10000, IHC:1:20-1:200

**Protein Background:**

**Gene ID:**

CCDC150

**Uniprot**

Q8NCX0

**Synonyms:**

Coiled-coil domain-containing protein 150, CCDC150

**Immunogen:**

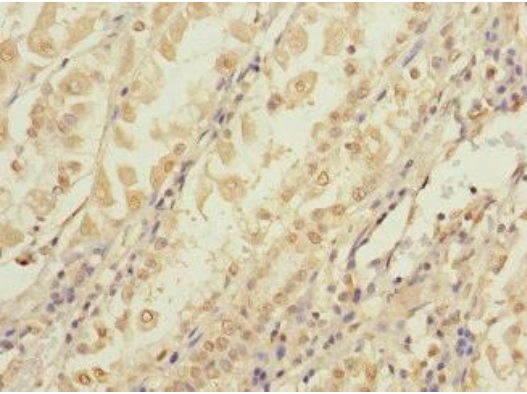
Recombinant Human Coiled-coil domain-containing protein 150 protein (1-245AA).

**Storage:**

Preservative: 0.03% Proclin 300. Constituents: 50% Glycerol, 0.01M PBS, PH 7.4

## Product Images

---



Immunohistochemistry of paraffin-embedded human gastric cancer using PACO38566 at dilution of 1:100.