

PACO38538

---

## Product Information

**Size:**

50ug

**Reactivity:**

Human, Mouse

**Source:**

Rabbit

**Isotype:**

IgG

**Applications:**

ELISA, WB, IHC

**Recommended dilutions:**

ELISA:1:2000-1:10000, WB:1:1000-1:5000,  
IHC:1:20-1:200

**Protein Background:**

ppGpp hydrolyzing enzyme involved in starvation response.

**Gene ID:**

HDHC3

**Uniprot**

Q8N4P3

**Synonyms:**

Guanosine-3',5'-bis(diphosphate) 3'-pyrophosphohydrolase MESH1 (EC 3.1.7.2) (HD domain-containing protein 3) (Metazoan SpoT homolog 1) (MESH1) (Penta-phosphate guanosine-3'-pyrophosphohydrolase) ((ppGpp)ase), HDHC3, MESH1

**Immunogen:**

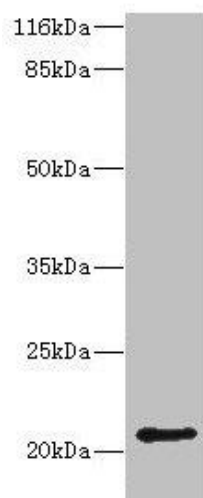
Recombinant Human Guanosine-3',5'-bis(diphosphate) 3'-pyrophosphohydrolase MESH1 protein (2-140AA).

**Storage:**

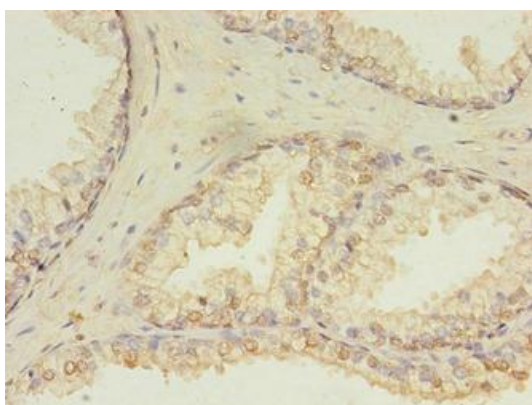
Preservative: 0.03% Proclin 300. Constituents: 50% Glycerol, 0.01M PBS, PH 7.4

## Product Images

---



Western blot. All lanes: HDDC3 antibody at 2 $\mu$ g/ml + Mouse heart tissue. Secondary. Goat polyclonal to rabbit IgG at 1/10000 dilution. Predicted band size: 21, 16 kDa. Observed band size: 21 kDa.



Immunohistochemistry of paraffin-embedded human prostate cancer using PACO38538 at dilution of 1:100.