

CCDC24 Antibody



PACO38534

Product Information

Size:

50ug

Reactivity:

Human

Source:

Rabbit

Isotype:

IgG

Applications:

ELISA, WB, IHC

Recommended dilutions:

ELISA:1:2000-1:10000, WB:1:500-1:2000,
IHC:1:20-1:200

Protein Background:

Gene ID:

CCDC24

Uniprot

Q8N4L8

Synonyms:

Coiled-coil domain-containing protein 24, CCDC24

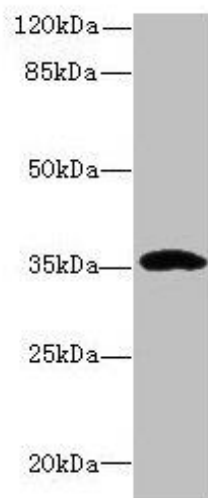
Immunogen:

Recombinant Human Coiled-coil domain-containing protein 24 protein (1-307AA).

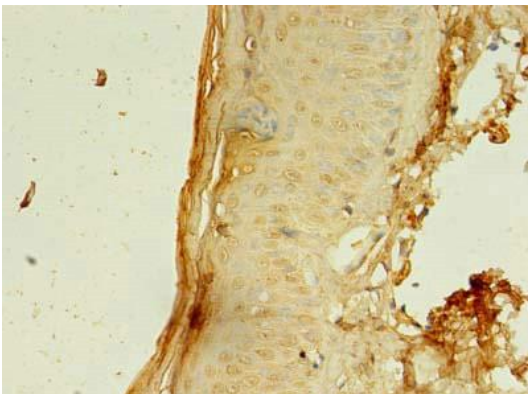
Storage:

Preservative: 0.03% Proclin 300. Constituents: 50% Glycerol, 0.01M PBS, PH 7.4

Product Images



Western blot. All lanes: CCDC24 antibody at 6 μ g/ml + MCF-7 whole cell lysate. Secondary. Goat polyclonal to rabbit IgG at 1/10000 dilution. Predicted band size: 35, 31 kDa. Observed band size: 35 kDa.



Immunohistochemistry of paraffin-embedded human skin tissue using PACO38534 at dilution of 1:100.