

# PDCL2 Antibody



PACO38526

---

## Product Information

**Size:**

50ug

**Reactivity:**

Human, Rat

**Source:**

Rabbit

**Isotype:**

IgG

**Applications:**

ELISA, WB, IHC, IF

**Recommended dilutions:**

ELISA:1:2000-1:10000, WB:1:500-1:2000,  
IHC:1:20-1:200, IF:1:50-1:200

**Protein Background:**

May play a role in germ cell maturation.

**Gene ID:**

PDCL2

**Uniprot**

Q8N4E4

**Synonyms:**

Phosducin-like protein 2, PDCL2

**Immunogen:**

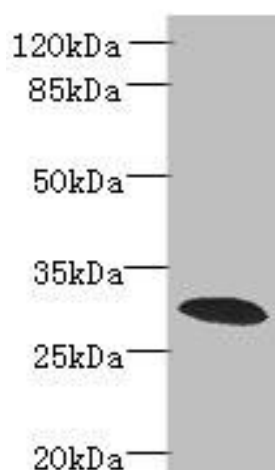
Recombinant Human Phosducin-like protein 2 protein (1-241AA).

**Storage:**

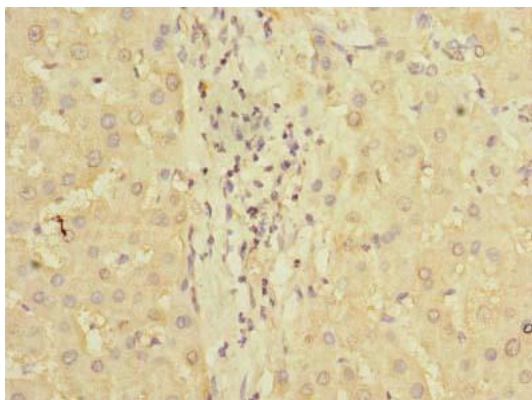
Preservative: 0.03% Proclin 300. Constituents: 50% Glycerol, 0.01M PBS, PH 7.4

## Product Images

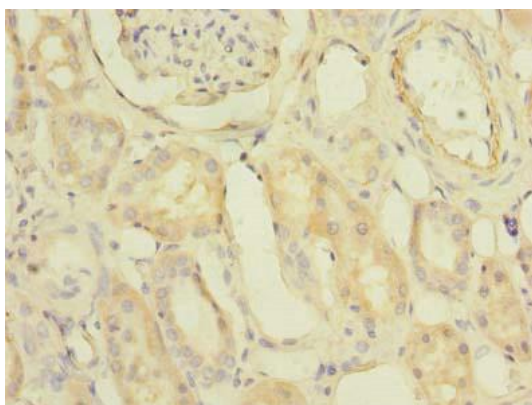
---



Western blot. All lanes: PDCL2 antibody at 4 $\mu$ g/ml + Rat gonadal tissue. Secondary. Goat polyclonal to rabbit IgG at 1/10000 dilution. Predicted band size: 29 kDa. Observed band size: 29 kDa.



Immunohistochemistry of paraffin-embedded human liver tissue using PACO38526 at dilution of 1:100.



Immunohistochemistry of paraffin-embedded human kidney tissue using PACO38526 at dilution of 1:100.