

RIBC1 Antibody



PACO38522

Product Information

Size:

50ug

Reactivity:

Human

Source:

Rabbit

Isotype:

IgG

Applications:

ELISA, IHC

Recommended dilutions:

ELISA:1:2000-1:10000, IHC:1:20-1:200

Protein Background:**Gene ID:**

RIBC1

Uniprot

Q8N443

Synonyms:

RIB43A-like with coiled-coils protein 1, RIBC1

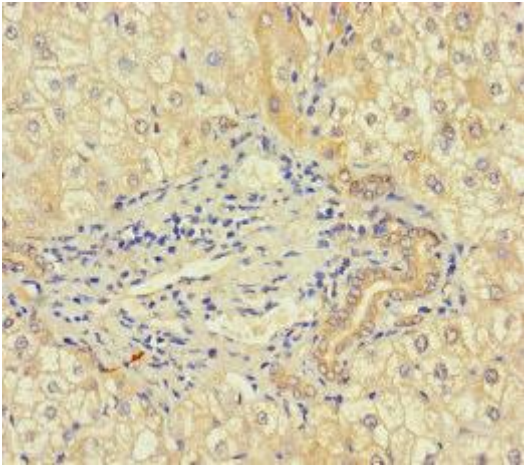
Immunogen:

Recombinant Human RIB43A-like with coiled-coils protein 1 protein (1-200AA).

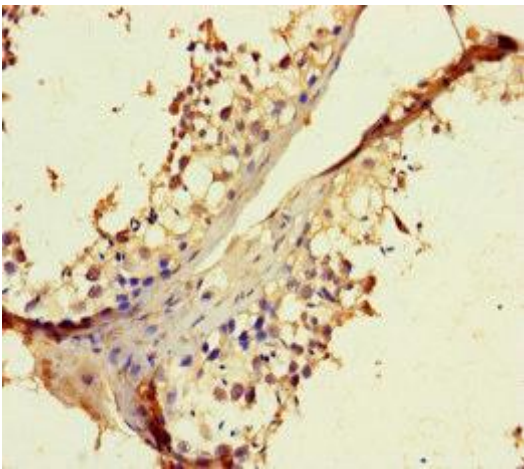
Storage:

Preservative: 0.03% Proclin 300. Constituents: 50% Glycerol, 0.01M PBS, PH 7.4

Product Images



Immunohistochemistry of paraffin-embedded human liver tissue using PACO38522 at dilution of 1:100.



Immunohistochemistry of paraffin-embedded human testis tissue using PACO38522 at dilution of 1:100.