

PRR11 Antibody



PACO38474

Product Information

Size:

50ug

Reactivity:

Human, Mouse

Source:

Rabbit

Isotype:

IgG

Applications:

ELISA, WB, IHC, IF

Recommended dilutions:

ELISA:1:2000-1:10000, WB:1:200-1:5000,
IHC:1:20-1:200, IF:1:50-1:200

Protein Background:

Plays a critical role in cell cycle progression.

Gene ID:

PRR11

Uniprot

Q96HE9

Synonyms:

Proline-rich protein 11, PRR11

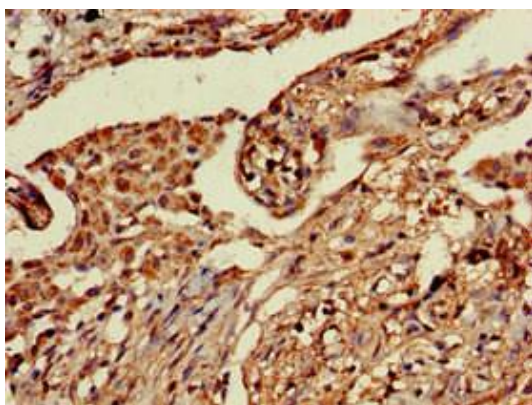
Immunogen:

Recombinant Human Proline-rich protein 11 protein (1-360AA).

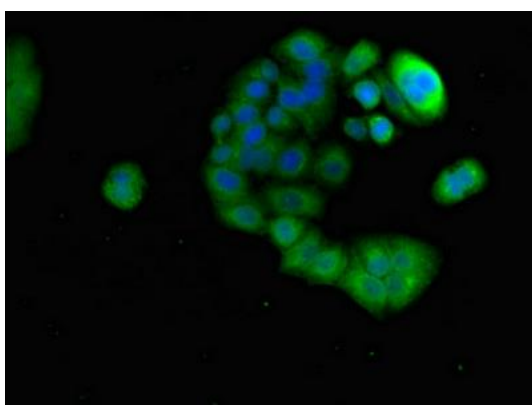
Storage:

Preservative: 0.03% Proclin 300. Constituents: 50% Glycerol, 0.01M PBS, PH 7.4

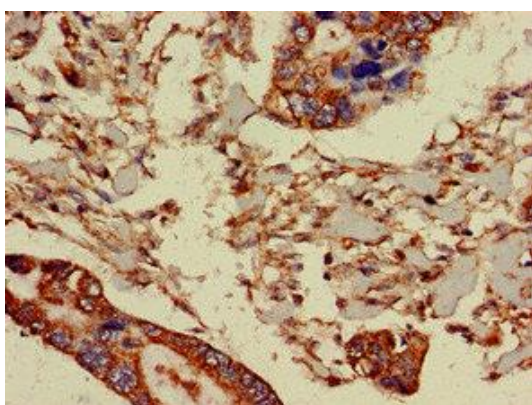
Product Images



Immunohistochemistry of paraffin-embedded human lung cancer using PACO38474 at dilution of 1:100.



Immunofluorescent analysis of PC-3 cells using PACO38474 at dilution of 1:100 and Alexa Fluor 488-conjugated AffiniPure Goat Anti-Rabbit IgG(H+L).



Immunohistochemistry of paraffin-embedded human pancreatic cancer using PACO38474 at dilution of 1:100.