

LIN37 Antibody



PACO38466

Product Information

Size:

50ug

Reactivity:

Human

Source:

Rabbit

Isotype:

IgG

Applications:

ELISA, IHC

Recommended dilutions:

ELISA:1:2000-1:10000, IHC:1:20-1:200

Protein Background:

nucleoplasm, G2/M transition of mitotic cell cycle, mitotic cell cycle, regulation of cell cycle.

Gene ID:

LIN37

Uniprot

Q96GY3

Synonyms:

Protein lin-37 homolog (Antolefinin), LIN37

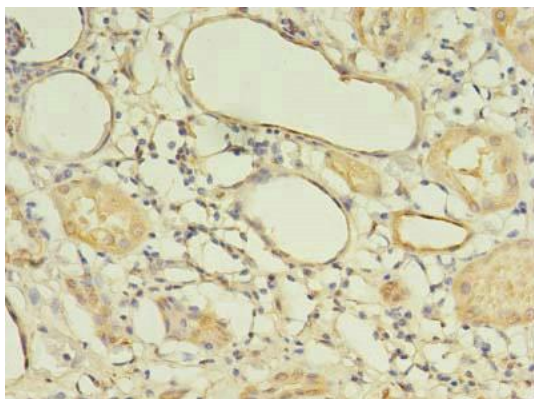
Immunogen:

Recombinant Human Protein lin-37 homolog protein (1-246AA).

Storage:

Preservative: 0.03% Proclin 300. Constituents: 50% Glycerol, 0.01M PBS, PH 7.4

Product Images



Immunohistochemistry of paraffin-embedded human kidney tissue using PACO38466 at dilution of 1:100.