

# CALML4 Antibody



PACO38458

---

## Product Information

**Size:**

50ug

**Reactivity:**

Human

**Source:**

Rabbit

**Isotype:**

IgG

**Applications:**

ELISA, IHC

**Recommended dilutions:**

ELISA:1:2000-1:10000, IHC:1:20-1:200

**Protein Background:**

**Gene ID:**

CALML4

**Uniprot**

Q96GE6

**Synonyms:**

Calmodulin-like protein 4 (Serologically defined breast cancer antigen NY-BR-20), CALML4

**Immunogen:**

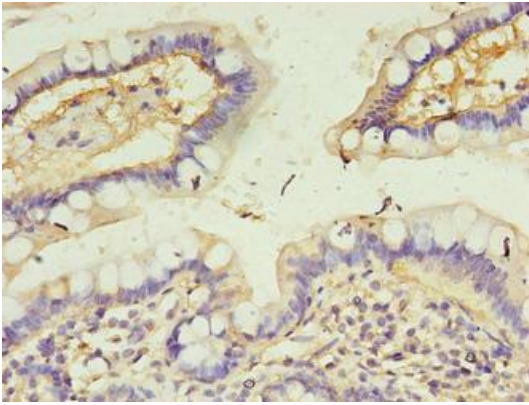
Recombinant Human Calmodulin-like protein 4 protein (1-120AA).

**Storage:**

Preservative: 0.03% Proclin 300. Constituents: 50% Glycerol, 0.01M PBS, PH 7.4

## Product Images

---



Immunohistochemistry of paraffin-embedded human small intestine tissue using PACO38458 at dilution of 1:100.