

# YIPF6 Antibody



PACO38438

---

## Product Information

**Size:**

50ug

**Reactivity:**

Human

**Source:**

Rabbit

**Isotype:**

IgG

**Applications:**

ELISA, IHC, IF

**Recommended dilutions:**

ELISA:1:2000-1:10000, IHC:1:20-1:200,  
IF:1:50-1:200

**Protein Background:**

May be required for stable YIPF1 and YIPF2 protein expression.

**Gene ID:**

YIPF6

**Uniprot**

Q96EC8

**Synonyms:**

Protein YIPF6 (YIP1 family member 6), YIPF6

**Immunogen:**

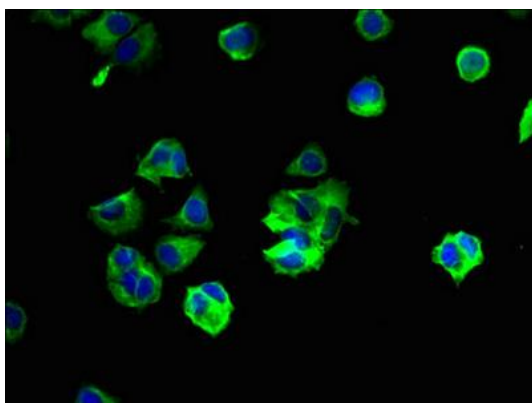
Recombinant Human Protein YIPF6 protein (2-84AA).

**Storage:**

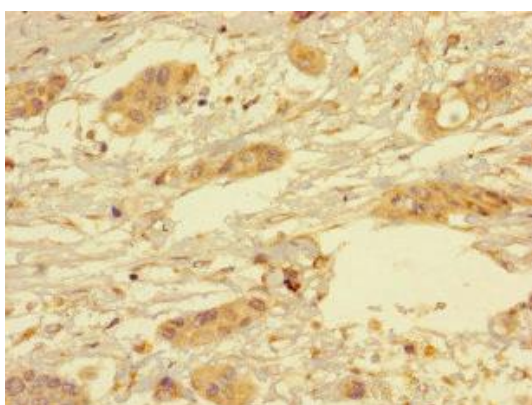
Preservative: 0.03% Proclin 300. Constituents: 50% Glycerol, 0.01M PBS, PH 7.4

## Product Images

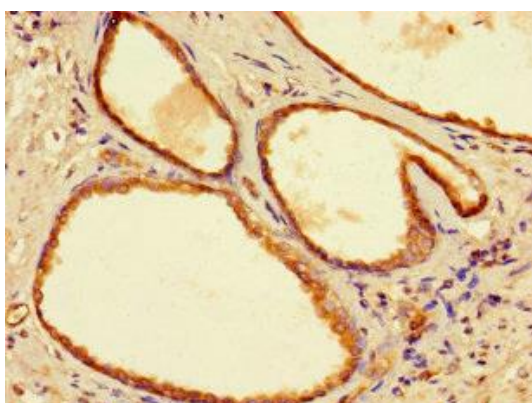
---



Immunofluorescent analysis of MCF-7 cells using PACO38438 at dilution of 1:100 and Alexa Fluor 488-conjugated AffiniPure Goat Anti-Rabbit IgG(H+L).



Immunohistochemistry of paraffin-embedded human pancreatic cancer using PACO38438 at dilution of 1:100.



Immunohistochemistry of paraffin-embedded human prostate cancer using PACO38438 at dilution of 1:100.