

PACO38430

Product Information

Size:

50ug

Reactivity:

Human

Source:

Rabbit

Isotype:

IgG

Applications:

ELISA, WB, IHC

Recommended dilutions:

ELISA:1:2000-1:10000, WB:1:500-1:2000,
IHC:1:20-1:200

Protein Background:

Catalyzes uridine to pseudouridine isomerization (pseudouridylation) of different mitochondrial RNA substrates. Acts on position 1397 in 16S mitochondrial ribosomal RNA (16S mt-rRNA). This modification is required for the assembly of 16S mt-rRNA into a functional mitochondrial ribosome. Acts on position 39 in mitochondrial tRNA(Phe). As a component of a functional protein-RNA module, consisting of RCC1L, NGRN, RPUSD3, RPUSD4, TRUB2, FASTKD2 and 16S mt-rRNA, controls 16S mt-rRNA abundance and is required for intra-mitochondrial translation.

Gene ID:

RPUSD4

Uniprot

Q96CM3

Synonyms:

Mitochondrial RNA pseudouridine synthase RPUSD4 (EC 5.4.99. -) (RNA pseudouridylylate synthase domain-containing protein 4), RPUSD4

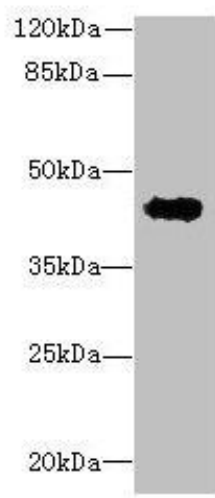
Immunogen:

Recombinant Human Mitochondrial RNA pseudouridine synthase RPUSD4 protein (41-240AA).

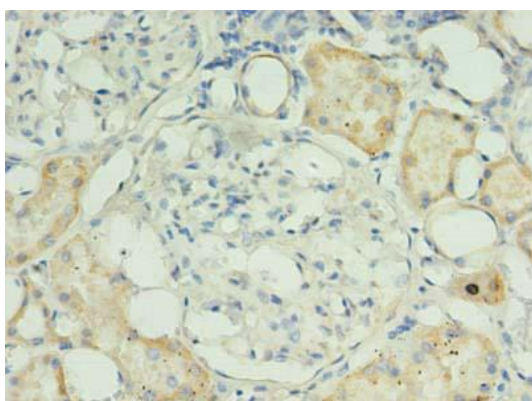
Storage:

Preservative: 0.03% Proclin 300. Constituents: 50% Glycerol, 0.01M PBS, PH 7.4

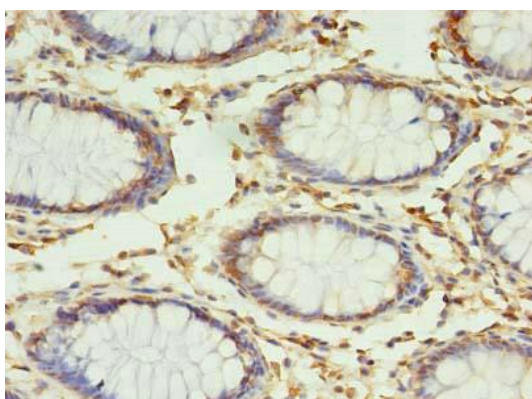
Product Images



Western blot. All lanes: RPUSD4 antibody at 0.5 μ g/ml + MCF-7 whole cell lysate. Secondary. Goat polyclonal to rabbit IgG at 1/10000 dilution. Predicted band size: 43, 39 kDa. Observed band size: 43 kDa.



Immunohistochemistry of paraffin-embedded human kidney tissue using PACO38430 at dilution of 1:100.



Immunohistochemistry of paraffin-embedded human colon cancer using PACO38430 at dilution of 1:100.